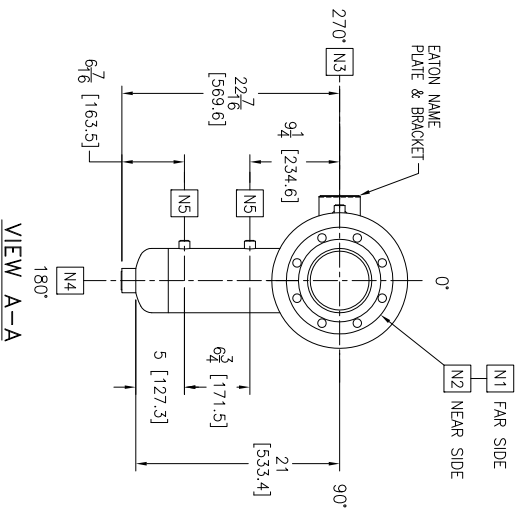
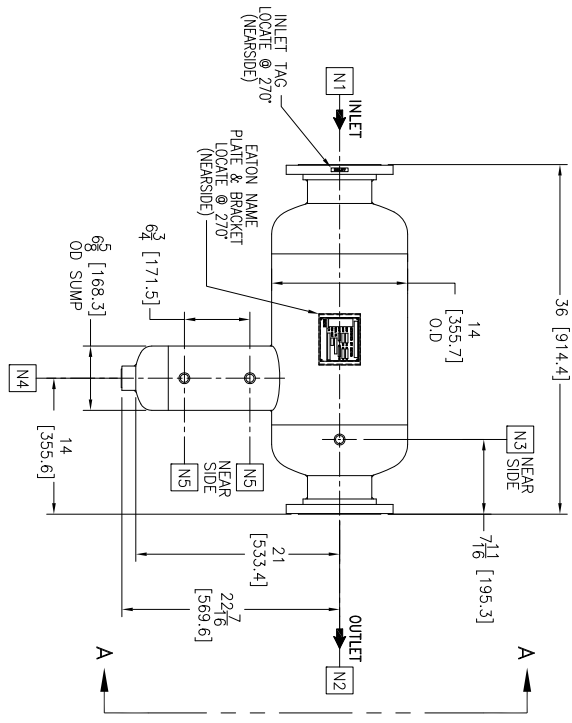


NOZZLE SCHEDULE				
MARK	SIZE	TYPE	RATING	SERVICE
N1	6	RFSO FLANGE	150#	INLET
N2	6	RFSO FLANGE	150#	OUTLET
N3	1/2"	CPLG HALF NPT	3000#	VENT
N4	1-1/2"	CPLG HALF NPT	3000#	DRAIN
N5	1/2"	CPLG HALF NPT	3000#	LIQUID LEVEL

CUSTOMER INFO	
NAME	
P.O. NO.	
QTY.	
S.O. NO.	
PART NO.	6311LS150S

REVISIONS			
REV	DESCRIPTION	BY	DATE
A	NEW RELEASE	FJM	02/16/17



- NOTES:**
1. UNITS ARE DESIGNED, FABRICATED, BUT NOT STAMPED IN ACCORDANCE WITH THE ASME BOILER & PRESSURE VESSEL CODE SECTION VIII, DIVISION 1, IN COMPLIANCE TO CURRENT MANDATORY EDITION.
 2. DIMENSIONS SHOWN IN [] ARE IN MILLIMETERS AND FOR REFERENCE ONLY. ACCEPTANCE OF THIS PART WILL BE BASED ON "INCH" UNITS & TOLERANCES ONLY.
 3. ALL BOLT HOLES ARE TO STRADDLE NATURAL CENTERLINES.
 4. APPROX. WEIGHT: 175 POUNDS.
 5. DESIGN DATA:
 DESIGN PRESSURE-- 150 PSIG
 DESIGN TEMPERATURE-- 300°F
 MIN. DESIGN METAL TEMP-- -20°F AT 150 PSIG
 HYDROTEST PRESSURE-- 206 PSIG
 CORROSION ALLOWANCE-- 0 INCHES
 RADIOGRAPHY-- NONE
 6. MATERIAL: SS-304 STAINLESS STEEL

TOLERANCES	
DECIMAL	(UNLESS OTHERWISE SPECIFIED)
.X ± .030	
.XX ± .005	
.XXX ± .005	

FRACTIONAL:
 NOZZLE & TO FLOOR: $\frac{1}{16}$ < 4' > $\frac{1}{8}$
 FACE TO FACE: $\frac{1}{16}$ < 4' > $\frac{1}{8}$
 ANGLULAR: $\pm 1'$
 FLANGES (H/V): $\pm \frac{1}{16}$
 VENT HOLES MUST STRADDLE & MACHINED PARTS TO BE FREE OF BURRS FOR ADDITIONAL TOLERANCE DETAILS REF. ES-211, ES-222 AND ES-223 REVIEWED FOR CLASSIFICATION PER PR-4

CRITICAL SIGNIFICANT

DRAWN BY	
FJM	SCALE
AS DRAWN	RESTRICTED
SHEET 1 OF 1	PROJECTION THIRD ANGLE

EATON HYDRAULICS GROUP
 FILTRATION DIVISION
 GALESBURG, ILLINOIS, USA & THIRTON FALLS, NEW JERSEY, USA

TITLE: 6" TYPE "31-LS" GAS/LIQUID SEPARATOR
 6"-150# RFSO FLANGES MAT'L. SS-304

DATE: 02/16/17 SIZE: DWG FILENAME: SD6311LS150S

REV: A

EATON CORPORATION - CONFIDENTIAL AND PROPRIETARY INFORMATION. THIS DOCUMENT IS THE PROPERTY OF EATON AND IS TO BE USED ONLY FOR THE PURPOSES SPECIFIED HEREIN. ANY REPRODUCTION OR DISTRIBUTION OF THIS DOCUMENT WITHOUT THE WRITTEN CONSENT OF EATON IS STRICTLY PROHIBITED. © 2017 EATON CORPORATION. ALL RIGHTS RESERVED.