

AETB 25KAIC Bolted Molded Case Circuit Breaker

Explosionproof, Dust-Ignitionproof, Watertight

NEC:

Class I, Division 1 and 2, Groups C, D
Class I, Zone 1 and 2, Groups IIB
Class II, Division 1 and 2, Groups E, F, G
Class III
Type 4X

Application

- Explosionproof circuit breaker enclosures are used where hazardous materials are handled or stored.
- These units are used for overload and short circuit protection, control of lighting and power circuits.

Features

- 25,000 AIC at 480 V and 240 V.
- Precision machined flame path between box and cover.
- Bolt on stainless steel slotted mounting feet.
- Stainless steel, captive Quad-Lead® cover bolts are standard (disengaged in 1-1/2 turns).
- Ground lug package and installation instructions for termination of ground wire enclosed.
- External operating handle with stops for limiting handle travel.
- Breaker operators can be locked in the ON or OFF position (up to 3 padlocks).
- External flange maximizes internal space.
- Standard outlets top and bottom for line and load wiring.
- Plugged 1/2" outlets top and bottom for breather and drain.
- Breakers mounted on a galvanized steel removable pan.
- O-ring gasket insures watertight integrity.

Standard Materials

- Bodies and covers: copperfree (4/10 of 1% max.) aluminum
- Cover bolts, hinges, breaker and operator shafts: stainless steel
- O-ring: neoprene

Standard Finishes

- Bodies and covers: gray epoxy powder coat inside and outside standard

Options

Must be listed in alphanumeric sequence at the end of the catalog number.

- Auxiliary switch (1A or 1B), add suffix —**AS1**.
- Auxiliary switch (2A or 2B), add suffix —**AS2**.
- Breather add suffix —**BR**.
- Drain add suffix —**DN**.
- External grounding stud, add suffix —**EGS**.
- Plastic nameplate, 2" x 4", 1/8" black letters on white surface, 3 lines max, specify legend, add suffix —**NP**.
- Shunt trip (specify voltage), add suffix —**ST**.
- Under voltage release (specify voltage), add suffix —**UV**.
- For higher ambient breaker rating, contact your local sales representative.

NEC Certifications and Compliances

- UL Standard: UL 1203, UL 50
- UL Classified: E84577



DISTRIBUTION EQUIPMENT: NEC/CFC EXPLOSIONPROOF CIRCUIT BREAKERS

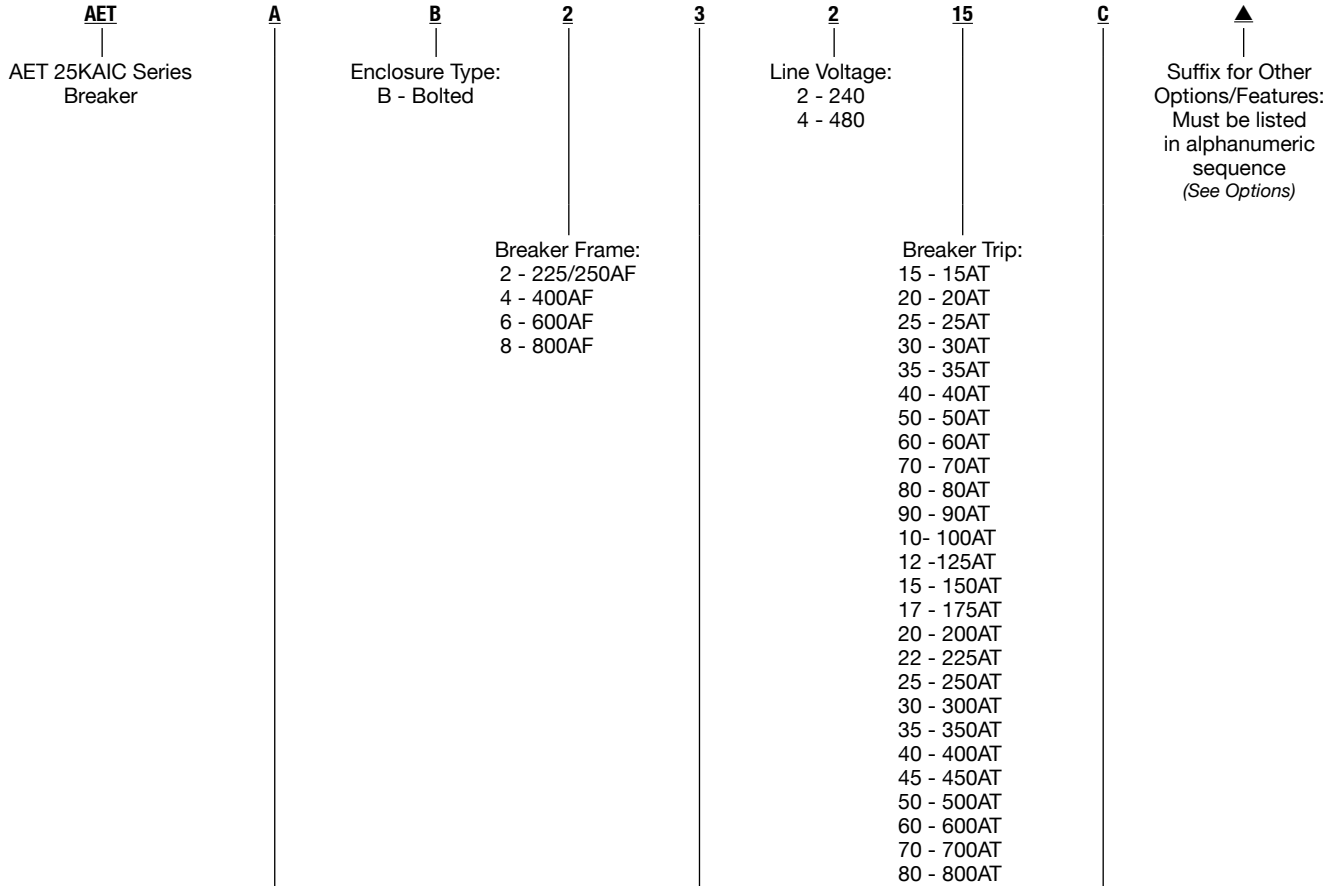

Appleton®

AETB 25KAIC Bolted Molded Case Circuit Breaker

Explosionproof, Dust-Ignitionproof, Watertight

NEC:
 Class I, Division 1 and 2, Groups C, D
 Class I, Zone 1 and 2, Groups IIB
 Class II, Division 1 and 2, Groups E, F, G
 Class III
 Type 4X

Catalog Numbering Guide



Enclosure Size:

Size	Max Amperage	Enclosure Size ①
A	50	06x10x04
B	100	06x16x04
C	150	11x20x05
E	225	11x24x06
F	400	11x30x06
L	800	18x42x07

Number of Poles:

- 1 - 1 Pole
- 2 - 2 Pole
- 3 - 3 Pole

Indicate Breaker Manufacturer:

- C - Cutler-Hammer (standard)
- S - Square D
- G - General Electric
- I - Siemens

DISTRIBUTION EQUIPMENT: NEC/CEC EXPLOSIONPROOF CIRCUIT BREAKERS



① The enclosure size is the nominal interior dimensions.

▲ To complete the catalog number please add the appropriate suffix for other options/features. These suffixes can be found in the modifications table in this section.

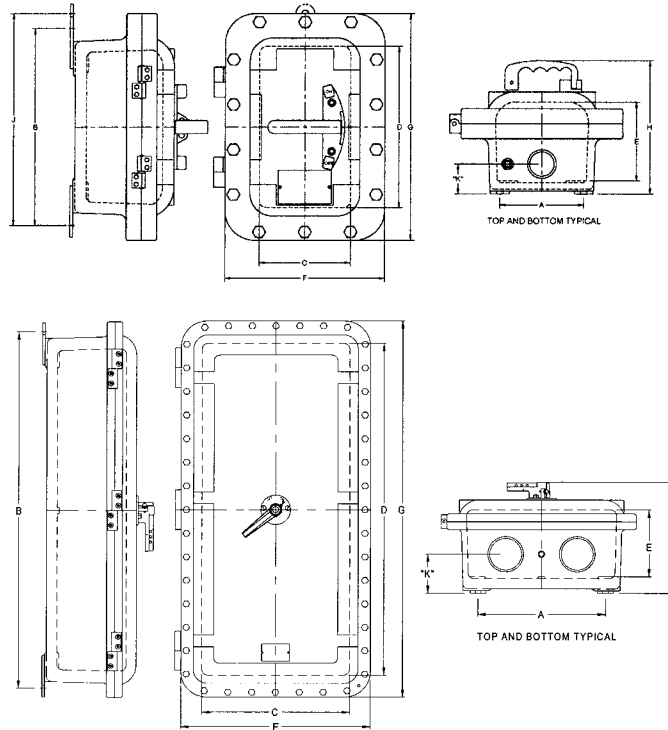


AETB 25KAIC Bolted Molded Case Circuit Breaker

Explosionproof, Dust-Ignitionproof, Watertight

NEC:
 Class I, Division 1 and 2, Groups C, D
 Class I, Zone 1 and 2, Groups IIB
 Class II, Division 1 and 2, Groups E, F, G
 Class III
 Type 4X

Dimensions in Millimeters (Inches)



Enclosure Size	Dia. Number	Dimensions in Millimeters (Inches)										Outlet Size (in)	Number of Outlets	Dimension mm (in) K	Approximate Weight kgs (lbs)
		Mounting		Inside				Outside							
		A	B	J	C	D	E	F	G	H					
A	1	139.7 (5.50)	333.5 (13.13)	358.9 (14.13)	155.7 (6.13)	273.0 (10.75)	133.3 (5.25)	270.0 (10.63)	387.3 (15.25)	224.5 (8.84)	1-1/2	2	50.8 (2.00)	17.24 (38)	
B	1	152.4 (6.00)	457.2 (18.00)	782.6 (19.00)	165.1 (6.50)	406.4 (16.00)	139.7 (5.50)	279.4 (11.00)	520.7 (20.50)	227.8 (8.97)	2	2	58.6 (2.31)	25.85 (57)	
C	1	260.3 (10.25)	574.8 (22.63)	Not Available	289.0 (11.38)	508.0 (20.00)	162.0 (6.38)	406.4 (16.00)	638.3 (25.13)	243.5 (9.59)	2-1/2	2	88.9 (3.50)	47.17 (104)	
E	1	215.9 (8.50)	689.1 (27.13)	Not Available	285.7 (11.25)	758.9 (29.88)	183.8 (7.63)	406.4 (16.00)	749.3 (29.50)	311.9 (12.28)	3	2	101.6 (4.00)	65.77 (145)	
F	1	241.3 (9.50)	692.1 (27.25)	Not Available	285.7 (11.25)	758.9 (29.88)	204.7 (8.06)	416.0 (16.38)	889.0 (35.00)	313.4 (12.34)	4	2	106.4 (4.19)	77.11 (170)	
L	3	406.4 (16.00)	1152.6 (45.38)	Not Available	473.2 (18.63)	1073.1 (42.25)	215.9 (8.50)	606.5 (23.88)	1216.1 (47.88)	361.9 (14.25)	4	4	127.0 (5.00)	190.06 (419)	

DISTRIBUTION EQUIPMENT: NEC/CEC EXPLOSIONPROOF CIRCUIT BREAKERS

