

PlexPower™ Portable Power Switchracks

NEC/CEC:

Class I Division 2, Groups B, C, D
Class I Zone 1 A/Exde IIB and H₂, T6
Type 3R, Type 4X, IP66

Applications

- Portable power switchracks provide temporary portable power for indoor or outdoor hazardous locations such as:
 - Petroleum plants
 - Chemical plants
 - Refineries
- Ideal for bringing power to remote locations during plant shutdowns.
- Limitless flexibility with number of circuits and receptacle combinations.

Features

- Component level protection on the PlexPower™ breaker enclosures and receptacles negating the need for conduit or cable seal fittings.
- GFI ground fault circuit breakers factory wired to U-Line 120 Vac receptacles.
- Standard off the shelf replaceable Cutler-Hammer breakers allow for ease of replacement when required.
- Breaker actuation can be either internal or external.
- Bright safety yellow powder coat textured finish makes units easily identifiable.
- Circuit breakers available in 1-, 2- or 3-pole up to 150 Amp standard or with GFI (5 mA) or EPD (30 mA) protection.
- Light weight aluminum enclosure make this product ideal for clamping to temporary scaffold or other structures.
- Gasketed sheet aluminum enclosures equipped with rain and drip shield.
- Can be equipped with higher amperage receptacles up to 60 Amp.
- Portable power equipment on heavy duty castors using traditional cast enclosure is also available.
- Possible configurations and number and type of receptacles are endless

Standard Materials

- Structure: steel-galvanized or aluminum
- Enclosures: 316L stainless steel, fiberglass reinforced polyester, sheet aluminum or sheet-steel
- Bus duct: stainless steel, steel-painted, steel-galvanized or aluminum
- Hardware: stainless steel

Standard Finish

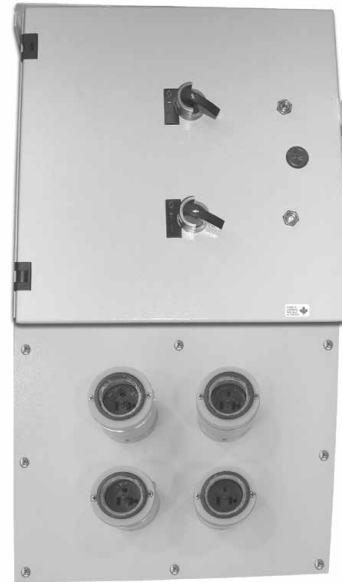
- Epoxy powder coat
- Natural finish

Options

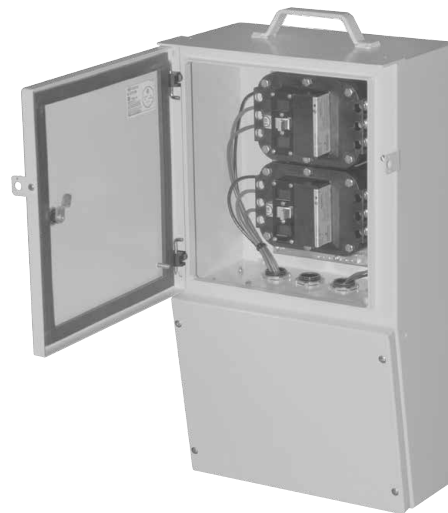
- External actuation
- LED breaker ON indicator lights

NEC/CEC Certifications and Compliances

- UL Standard: 67, 1203, 1604
- UL Listed: 60079-0, 7, 1
- CSA Standard: C22.2 Nos 29, 213
- CSA Certified: 1788693



Shown with PlexPower™ External Actuating Enclosed Circuit Breaker and Receptacles



Shown Open with PlexPower™ Breaker Enclosures