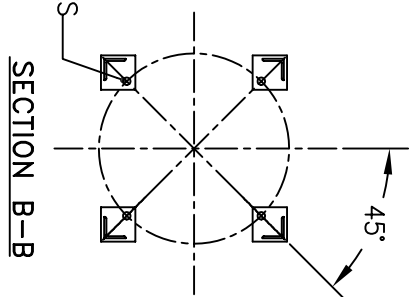


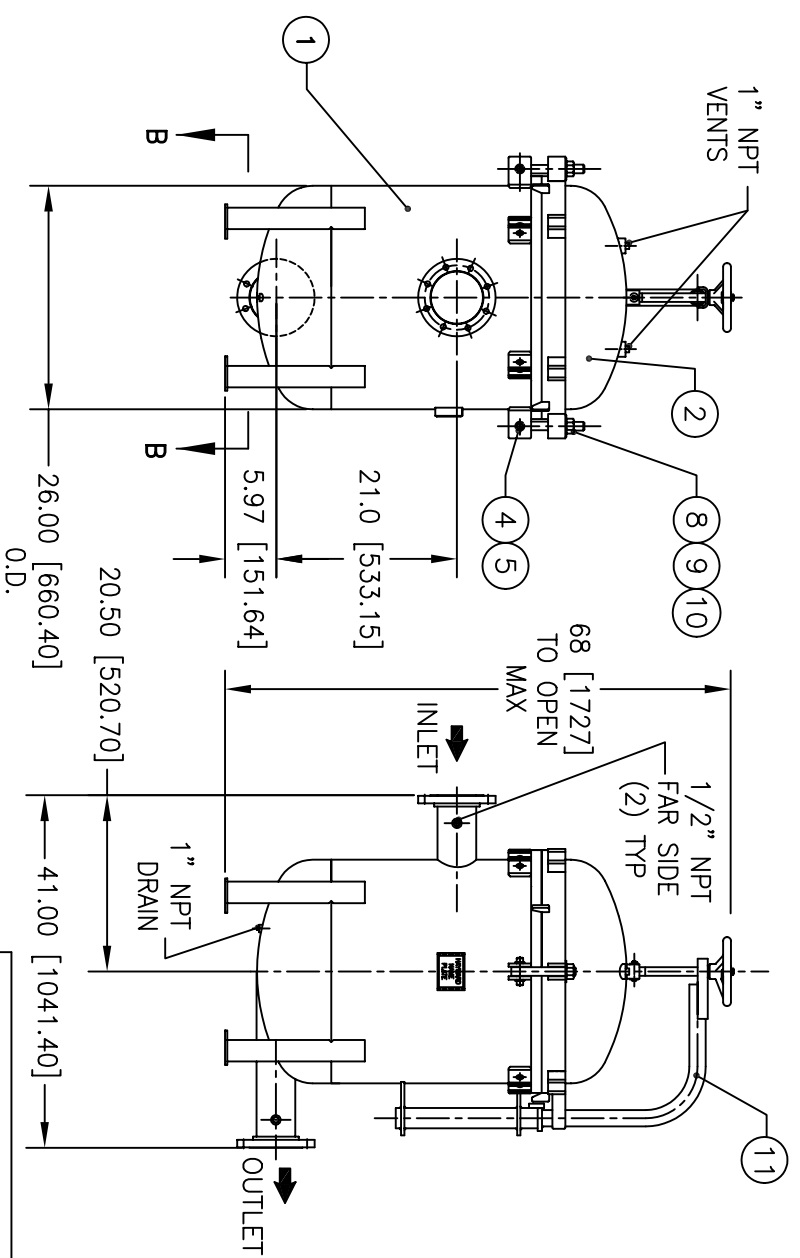
(4) 3/4" ϕ [19 ϕ] BOLT HOLES
LOCATED AS SHOWN
ON 22.13 ϕ [562 ϕ] B.C.



ITEM	PART NAME	MATERIAL
1	BODY	SA516 GR 70
2	COVER	SA516 GR 70
3	O-RING	BUNA-N
4	PIN	SA193 B7 ZINC PL
5	SNAP RING	STEEL ZINC PL
6	BASKET RESTRAINER	316 SS
7	FILTER BAG RETAINER	316 SS
8	EYE BOLT	SA193 B7 ZINC PL
9	HEX NUT	SA194 2H ZINC PL
10	WASHER	STEEL ZINC PL
11	DAVIT ASSEMBLY	CARBON STEEL

NOTES:

1. UNITS ARE TO BE DESIGNED, FABRICATED & "U" STAMPED IN ACCORDANCE WITH ASME SECT. VIII, DIV. 1 BOILER & PRESSURE VESSEL CODE, IN COMPLIANCE TO LATEST ADDENDA.
2. INLET / OUTLET FLANGE CONNECTIONS PER ANSI B 16.5.
3. DESIGN PRESSURE: 150 PSI (MAMP)
DESIGN TEMPERATURE 250° F.
MDMT: -20° F @ 150 PSI.
4. ALL DIMENSIONS ARE IN INCHES / (MM).
5. ALL BOLT HOLES ARE TO STRADDLE NATURAL CENTERLINES.
6. APPROX. WEIGHT (DRY) 460 LB. (209 KG.)
7. PAINT PER HAYWARD STANDARD ES-301.



GAF and the GAF logo are registered trademarks of GAF Corporation in the United States, and are used under license.

ELECTRONIC FILE NAME: HD0604TC.DWG
REF. ECR 9673 DATE 07/25/01

UNAUTHORIZED USE, MANUFACTURE OR REPRODUCTION IN WHOLE OR IN PART IS PROHIBITED. DRAWING, DESIGN AND OTHER DISCLOSURES PROPERTY OF HAYWARD INDUSTRIAL PRODUCTS, INC.

SIZE	DWG NO	DATE	REV
A		07/25/01	A

HAYWARD INDUSTRIAL PRODUCTS, INC.
Manufactures of LOEFLEER FILTRATION & GAF[®] FILTER SYSTEMS
900 FAIRMOUNT AVENUE, ELIZABETH, NEW JERSEY 07207

MAXILINE MBF0602HD FILTER VESSEL
4" 150# RF INLET/TANGENTIAL OUTLET
CARBON STEEL

CERTIFIED FOR:
P.O. NO.:
REG. NO.:
QUOTE NO.:
TAG NO.:
VESSEL CODE: MBF-0602-CS10-040A-UT-11HD
HAYWARD PART NO.: F3AV0600102