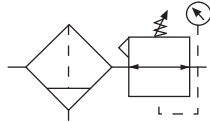


# Filter / Regulator – Miniature SB1

= "Most Popular"



**SB1-02-LYS0**

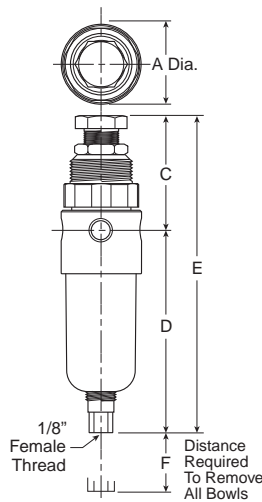
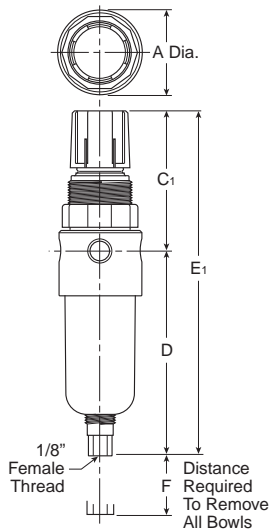


**SB1-02-LYSS**

## Features

- Stainless Steel Construction Handles Most Corrosive Environments
- Large Diaphragm to Valve Area Ratio for Precise Regulation and High Flow Capacity
- 1/8" Female Threaded Drain
- Meets NACE Specifications MR-01-75/ISO 15156.
- High Flow: 1/4" – 12 SCFM<sup>§</sup>

<sup>§</sup> SCFM = Standard cubic feet per minute at 100 PSIG inlet, 75 PSIG no flow secondary setting and 15 PSIG pressure drop.



## Dimensions

| Models                        | Inches (mm) | A            | C            | C <sub>1</sub> | D            | E             | E <sub>1</sub> | F            |
|-------------------------------|-------------|--------------|--------------|----------------|--------------|---------------|----------------|--------------|
| Miniature Unit<br>SB1-02-XXXX |             | 1.56<br>(40) | 2.17<br>(55) | 2.63<br>(67)   | 3.63<br>(92) | 5.80<br>(147) | 6.26<br>(159)  | 1.58<br>(40) |

## Specifications

|  |           |   |
|--|-----------|---|
| Flow Capacity*   | Port Size | 5 Micron  |
|  | 1/4       | 12 SCFM   |
| Bowl Capacity  |           | 1.0 Ounces  |
| Filter Rating  |           | 5 Micron  |
| Gauge Port   |           | 1/4 Inch  |
| Port Threads   |           | 1/4 Inch  |
| Pressure & Temperature Ratings –   |           |   |
| SB1-02-LYS0 –  |           | 300 PSIG Max (20.7 bar)<br>0°F to 150°F (-18°C to 66°C)       |
| SB1-02-LYSS –  |           | 300 PSIG Max (20.7 bar)<br>0°F to 180°F (-18°C to 82°C)       |
| Auto Pulse Drain –   |           | 10 to 175 PSIG (0.7 to 12 bar)<br>32°F to 150°F (0°C to 66°C) |
| <b>Note: Air must be dry enough to avoid ice formation at temperatures below 32°F (0°C).</b> |           |   |
| Useful Retention **  |           | 0.4 Ounce   |
| Weight   |           | 0.8 lb. (0.36 kg)   |

\* Inlet pressure 100 PSIG (6.9 bar) and 75 PSIG (5.2 bar) no flow secondary setting and 25% pressure drop.

\*\* Useful Retention refers to volume below the quiet zone baffle.

## Materials of Construction

|                                |                     |
|--------------------------------|---------------------|
| Adjustment Mechanism / Springs | 316 Stainless Steel |
| Body                           | 316 Stainless Steel |
| Bonnet (SB1-02-LYS0)           | Acetal              |
| Bonnet (SB1-02-LYSS)           | 316 Stainless Steel |
| Bottom Plug                    | 316 Stainless Steel |
| Knob (SB1-02-LYS0)             | Polypropylene       |
| Knob (SB1-02-LYSS)             | 316 Stainless Steel |
| Poppet                         | 316 Stainless Steel |
| Seals                          | Fluorocarbon        |

### WARNING

**Product rupture can cause serious injury.  
Do not connect regulator to bottled gas.  
Do not exceed maximum primary pressure rating.**

## CAUTION:

**REGULATOR PRESSURE ADJUSTMENT** – The working range of knob adjustment is designed to permit outlet pressures within their full range. Pressure adjustment beyond this range is also possible because the knob is not a limiting device. This is a common characteristic of most industrial regulators, and limiting devices may be obtained only by special design.

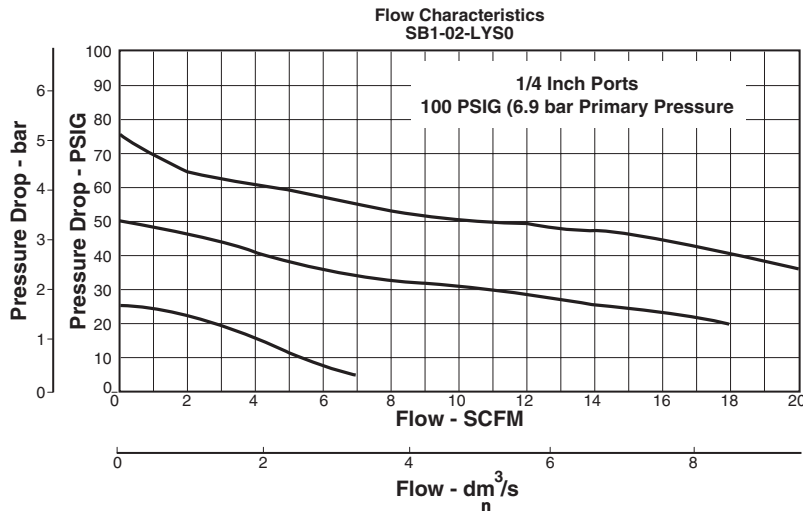
For best performance, regulated pressure should always be set by increasing the pressure up to the desired setting.



### SB1 Regulator Kits & Accessories

- Bonnet Kit SB1-02-LYS0 (Knob Included) .....SRP-96-017
- Bonnet Kit SB1-02-LYSS (Knob Included) .....CKR354YSS
- Filter Element Kits –
  - Particulate (5 Micron)..... SRP-96-001
  - Particulate (20 Micron)..... SRP-96-002
- Gauge (Stainless) –
  - 160 PSIG (0 to 1100 kPa), 1-1/2" Face .....K4515N14160SS
- Manual Twist Drain (New) ..... SAP05481
- Manual Twist Drain (Old) ..... SRP-96-008
- Mounting Bracket (Stainless)..... 161X57-SS
- Panel Mount Nut –
  - Stainless .....SRP-96-019
  - Plastic ..... R05X51-P
- Pipe Nipple –
  - 1/4" 316 Stainless Steel ..... SRP-96-009
- Service Kit –
  - Relieving .....SRP-96-015
  - Non-Relieving .....SRP-96-016
- Springs –
  - 0-25 PSIG Range .....SPR-375-2-SS
  - 0-60 PSIG Range..... SPR-376-1-SS
  - 0-125 PSIG Range ..... SPR-377-1-SS

**Note:** Order pressure gauge and panel mount nut separately.  
**Note:** 1.25" dia. (32mm) hole required for panel mounting  
 (order panel nut separately).



### Ordering Information

| Model Type    | Port Size | 0 to 125 PSIG<br>(0 to 8.6 bar) | 0 to 25 PSIG<br>(0 to 1.7 bar) | 0 to 60 PSIG<br>(0 to 4.1 bar) |
|---------------|-----------|---------------------------------|--------------------------------|--------------------------------|
| Relieving     | 1/4       | SB1-02-LYS0                     | SB1-02-JYS0                    | SB1-02-KYS0                    |
| Non-Relieving | 1/4       | SB1-02-YYSO                     | SB1-02-VYS0                    | SB1-02-XYS0                    |

Options - To order an option supplied with the unit model, add the appropriate coded suffix letter in the designated position of the model number.