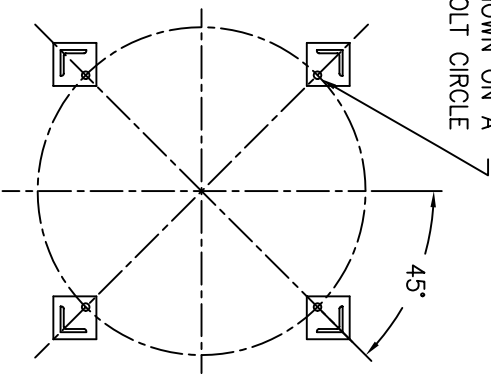


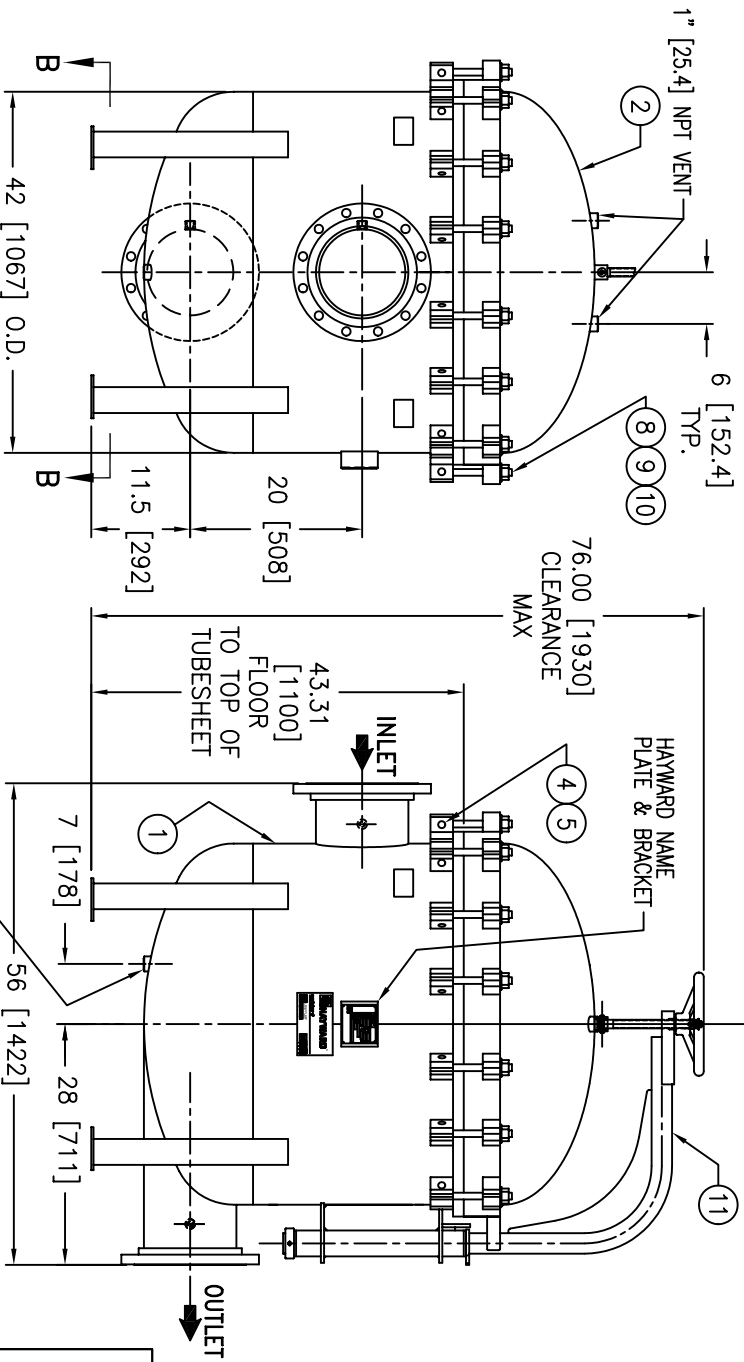
(4) 7/8"φ [22φ] BOLT HOLES
 LOCATED AS SHOWN ON A
 38.13φ [969φ] BOLT CIRCLE



| ITEM | PART NAME | MATERIAL |
|------|---------------------|------------------|
| 1 | BODY | SA516 GR 70 |
| 2 | COVER | SA516 GR 70 |
| 3 | O-RING | BUNA-N |
| 4 | PIN | SA193 B7 ZINC PL |
| 5 | SNAP RING | STEEL ZINC PL |
| 6 | BASKET RESTRAINER | 316 SS |
| 7 | FILTER BAG RETAINER | 316 SS |
| 8 | EYE BOLT | SA193 B7 ZINC PL |
| 9 | HEX NUT | SA194 2H ZINC PL |
| 10 | WASHER | STEEL ZINC PL |
| 11 | DAVIT ASSEMBLY | CARBON STEEL |

NOTES:

1. UNITS ARE TO BE DESIGNED, FABRICATED & "U" STAMPED IN ACCORDANCE WITH ASME SECT. VIII, DIV. 1 BOILER & PRESSURE VESSEL CODE, IN COMPLIANCE TO LATEST ADDENDA.
2. INLET / OUTLET FLANGE CONNECTIONS PER ANSI B 16.5.
3. DESIGN PRESSURE: 150 PSI (MAMP)
 DESIGN TEMPERATURE 250° F.
 MDMT - -20° F @ 150 PSI.
4. ALL DIMENSIONS ARE IN INCHES / (MM).
5. ALL BOLT HOLES ARE TO STRADDLE NATURAL CENTERLINES.
6. APPROX. WEIGHT (DRY) 1800 LB. (816 KG.)
7. PAINT C/STL. PER HAYWARD STANDARD ES-301.



ELECTRONIC FILE NAME: HD1410TC.DWG
 REF. ECR D666 DATE 01/20/06

UNAUTHORIZED USE, MANUFACTURE OR REPRODUCTION IN WHOLE OR IN PART IS PROHIBITED. DRAWING, DESIGN AND OTHER DISCLOSURES PROPERTY OF EATON FILTRATION, LLC

| | |
|--|---|
| | EATON FILTRATION, LLC 900 FAIRMOUNT AVENUE, ELIZABETH, NEW JERSEY 07207 |
| | NAME: MAXILINE MBF1402HD FILTER VESSEL 10" 150# RF INLET / TANGENTIAL OUTLET CARBON STEEL |
| DRAWN: VA DATE: 11/21/00 CERT: LF DATE: 1/24/01 | REV: C |
| HD1410TC | |