

ATX™ JBDR Series Pre-Drilled Round Junction Boxes

Flameproof

ATEX:
Zone 1 and 2 – 21 and 22
⊕ II 2 GD
IP66 – IK10

Applications

- Small terminal junction boxes designed to facilitate electrical connections in hazardous areas.
- Designed for use in Zone 1 or 2 areas, where flammable gases or vapors are present either continuously or intermittently.
- Ideal for use in wet or corrosive atmospheres such as:
 - Petroleum refineries
 - Chemical refineries
 - Other industrial process facilities
- Designed for use in Zone 21 or 22 areas, where flammable dusts are present either continuously or intermittently such as:
 - Food processing
 - Dairy
 - Brewing
 - Silos
 - Other facilities

Features

- IK10 (20 Joules) high impact resistant box.
- Pillar type terminal block (4 x terminals) for easy connection.
- Terminal capacity: 4 x 4 mm² (0.006 x 0.006 in²) or 2 x 6 mm² (0.003 x 0.009 in²).
- Internal Earth: ground plate with 4 x M4 screws for connection to 4 mm diameter lugs.
- External Earth: M5 screw.
- Back plate supplied.
- Operating temperature -40 °C to +55 °C (-40 °F to +131 °F).

Standard Materials

- Housing: gray painted marine grade aluminum
- Hardware: stainless steel

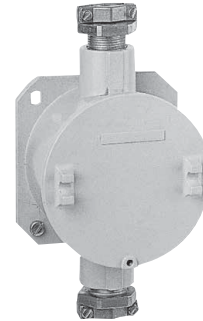
ATEX Certifications and Compliances

- Certification Type BR1d
 - Gas, Zones 1 and 2:
 - Conforming to ATEX 94/9/CE: ⊕ II 2 G
 - Type of Protection: Ex d IIC
 - Temperature Class: T6 to T4
 - Dust, Zones 21 and 22:
 - Conforming to ATEX 94/9/CE: ⊕ II 2 D
 - Type of Protection: Ex tD A21
 - Surface Temperature: T95 °C (T203 °F)
- Ambient Temperature: -40 °C to +55 °C (-40 °F to +131 °F)
- CE Declaration of Conformity: 50230
- ATEX Certificate: LCIE 02 ATEX 6056
- Index of Protection according EN/IEC 60529: IP66
- Internal Volume: ≤ 2dm³ (122 in³) – 2 liters
- Index of Protection according EN/IEC 60529: IP66
- Impact Resistance (shock): IK10

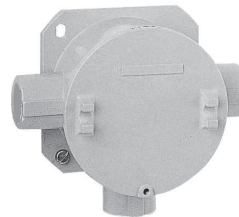
EURASEC Certification

- Certification Type BR1d
 - EURASEC N° TC RU C-FR.Γ505.B.00911

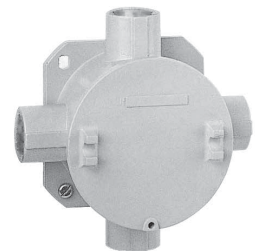
2 Entry Version with Cable Glands



3 Entry Version



4 Entry Version



ATX™ JBDR Series Pre-Drilled Round Junction Boxes

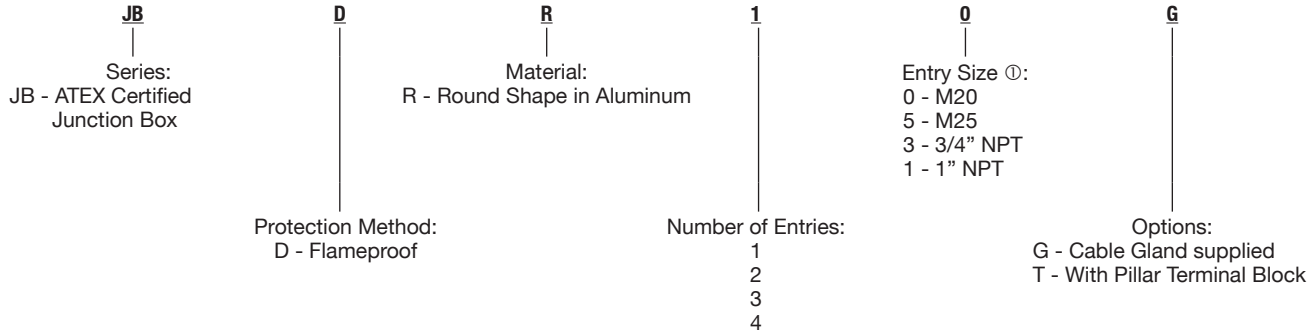
Flameproof




ATEX:
Zone 1 and 2 – 21 and 22
II 2 GD
IP66 – IK10

Appleton®

ENCLOSURES AND JUNCTION BOXES: ATEX/IECEx FLAMEPROOF JUNCTION BOXES

Catalog Numbering Guide — JBDR Series Pre-Drilled Round Junction Boxes



Equipment	Weight kg (lb)	Volume dm ³ (in ³)	Catalog Number
Threaded Entries with M25 Integrated Cable Gland: For unarmored cable: – sealed Ø: 9 to 15 mm (0.35 to 0.59") (093496)			
 2 Entry	0.8 (1.76)	2 (122.05)	JBDR25G
2 x M25 entries (feed through) 2 integrated cable glands supplied			
3 x M25 entries (in a "T") 3 integrated cable glands supplied	0.8 (1.76)	2 (122.05)	JBDR35G
4 x M25 entries (in a cross) 4 integrated cable glands supplied	0.9 (1.98)	2 (122.05)	JBDR45G
Threaded Entries for M20 Cable Gland – Not Supplied			
 3 Entry	1.54 (0.70)	2 (122.05)	JBDR20
2 x M20 entries (feed through)			
3 x M20 entries (in a "T")	1.54 (0.70)	2 (122.05)	JBDR30
4 x M20 entries (in a cross)	0.8 (1.76)	2 (122.05)	JBDR40
Threaded Entries for NPT 3/4" Cable Gland – Not Supplied			
 4 Entry	1.54 (0.7)	2 (122.05)	JBDR23
2 x 3/4" NPT entries (feed through)			
3 x 3/4" NPT entries (in a "T")	1.54 (0.70)	2 (122.05)	JBDR33
4 x 3/4" NPT entries (in a cross)	0.8 (1.76)	2 (122.05)	JBDR43
Threaded Entries for NPT 1" Cable Gland – Not Supplied			
	0.8 (1.76)	2 (122.05)	JBDR41
4 x 1" NPT entries (in a cross)			

Accessories

Description	Weight kg (lb)	Volume dm ³ (in ³)	Catalog Number
Pillar Terminal Block			
4 terminals 4 x 4 mm ² (0.006 x 0.006 in ²) or 2 x 6 mm ² (0.003 x 0.009 in ²) cables	0.1 (0.22)	0.4 (24.41)	TBP44
M25 Integrated Cable Gland			
for unarmored cables — dia. 9 to 15 mm (0.35 to 0.59")	0.6 (1.32)	0.9 (54.92)	093496

① For other entry size, use adaptor.

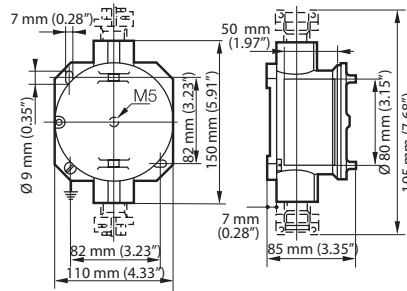
ATX™ JBDR Series Pre-Drilled Round Junction Box

Flameproof

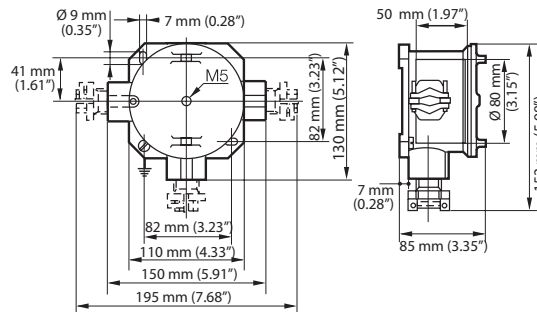
ATEX:
 Zone 1 and 2 - 21 and 22
 II 2 GD
 IP66 - IK10

Dimensions in Millimeters (Inches)

2 Entry Version



3 Entry Version



4 Entry Version

