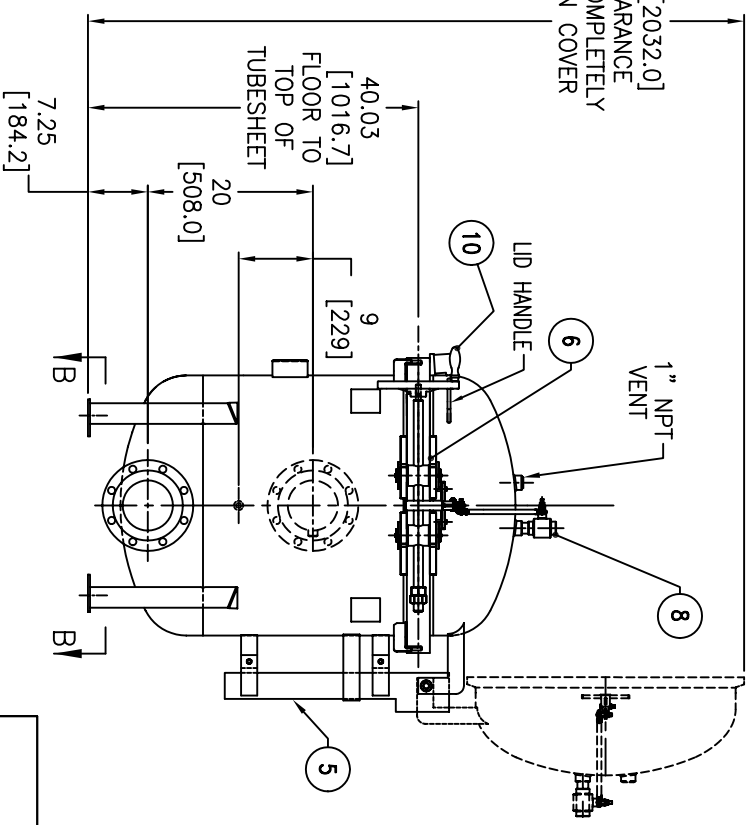
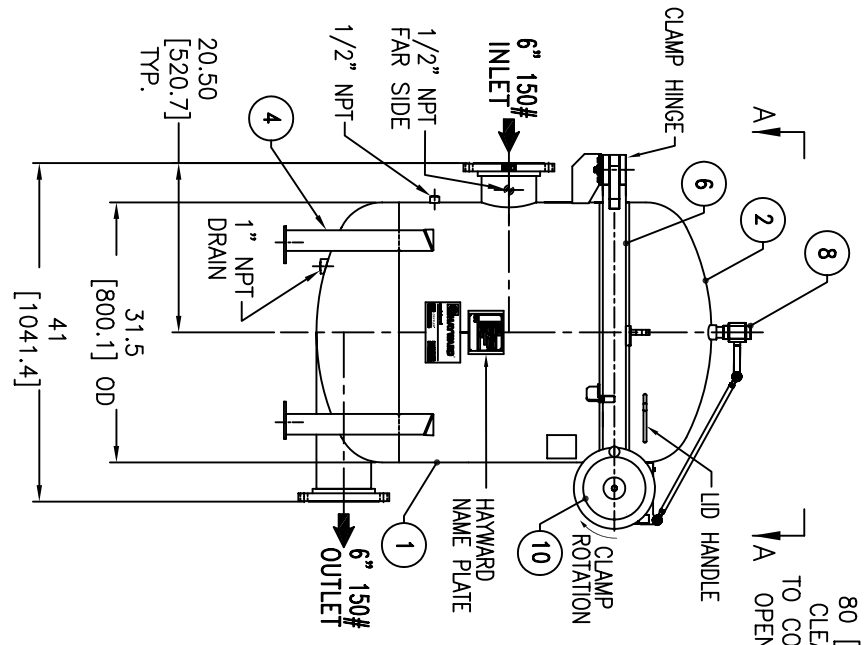


(4) .75 [19.0] Ø BOLT HOLES
LOCATED ON 30.71 [780.0] B.C.D.

ITEM	PART NAME	MATERIAL
1	BODY	SA240-316/316L
2	COVER	SA240-316/316L
3	O-RING	BUNA-N
4	LEGS	STAINLESS STEEL
5	SPRING ASSISTED MECHANISM	STAINLESS STEEL
6	CLAMP ASSEMBLY	STAINLESS STEEL
7	FILTER BAG HOLD DOWN	316 SS
8	1" VENT VALVE ASSY.	316 SS
9	SPINDLE BOLT	SA193-87 NEDOX COATED
10	SPINDLE HANDLE	ALUMINUM (BLACK COATED)

NOTES:

1. UNITS ARE DESIGNED, FABRICATED & U STAMPED IN ACCORDANCE WITH ASME SECT. VIII, DIV. 1 BOILER & PRESSURE VESSEL CODE, IN COMPLIANCE TO LATEST ADDENDA.
2. INLET/OUTLET FLANGE CONNECTIONS PER ANSI B16.5
3. DESIGN PRESSURE: 150 PSIG @ 250°F (10.3 BAR @ 121.1°C)
4. ALL DIMENSIONS ARE IN INCHES / [mm]
5. ALL BOLT HOLES STRADDLE NATURAL CENTERLINE.
6. APPROX. WEIGHT (DRY): 920 lbs. (417 kgs.)
7. APPROX. SHIPPING WEIGHT 1050 lbs. (476 kgs.)



ELECTRONIC FILE NAME: SE0606TS.DWG
REF. ECR D649 DATE 01/04/06

UNAUTHORIZED USE, MANUFACTURE OR REPRODUCTION IN WHOLE OR IN PART IS PROHIBITED. DRAWING, DESIGN AND OTHER DISCLOSURES PROPERTY OF EATON FILTRATION, LLC

		DATE	CERT.	LH	DATE	REV
		3/19/03			3/19/03	D
EATON FILTRATION, LLC 900 FAIRMOUNT AVENUE, ELIZABETH, NEW JERSEY 07207		NAME: MBF-0602 FILTER VESSEL 6"-150# INLET/ TANGENTIAL OUTLET SPINDLE TYPE-SE (SSTL)				
CERTIFIED FOR: P.O. NO.: REG. NO.: QUOTE NO.: TAG NO.: VESSEL CODE: V-MBF-0602-AB10-060A-UT-11SE PART NUMBER: F3AV0600200						
DRAWN	FJM					
SIZE	DWG NO					
A						
SE0606TS						