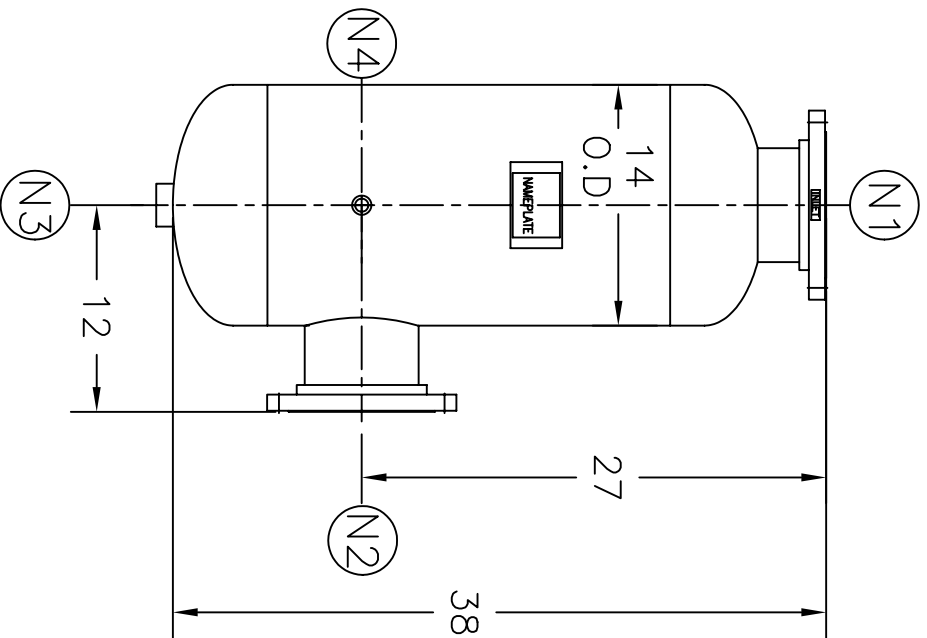


NOZZLE SCHEDULE			
ITEM	QTY.	NAME	DESCRIPTION
N1	1	INLET	6"-150# RFSO ASME B16.5
N2	1	OUTLET	6"-150# RFSO ASME B16.5
N3	1	DRAIN	1-1/2" NPT 3000# COUPLING
N4	1	VENT	1/2" NPT 3000# COUPLING



REV	DATE	CHANGE	ECR	BY	APP
A	9/17/01	NEW ISSUE	9826	GC	VH
B	11/1/05	REVISED TITLE BLOCK	D507	FM	LH

NOTES:

1. UNITS ARE TO BE DESIGNED, FABRICATED, AND "U" OR "UM" STAMPED (IF REQUIRED) IN ACCORDANCE WITH ASME B & PV CODE, SECTION VIII, DIVISION 1 IN COMPLIANCE TO CURRENT PUBLISHED ADDENDA.
2. ALL DIMENSIONS ARE IN INCHES.
3. ALL BOLT HOLES ARE TO STRADDLE NATURAL CENTERLINES.
4. SHIPPING WEIGHT: 250 POUNDS.
5. DESIGN DATA:

DESIGN PRESSURE- 150 PSIG
 DESIGN TEMPERATURE- 450° F
 MIN. DESIGN METAL TEMP.- -20° F @ 150 PSIG
 HYDROTEST PRESSURE- 195 PSIG
 CORROSION ALLOWANCE- 0 INCHES

6. MATERIAL: CARBON STEEL.

ELECTRONIC FILE NAME:
SD633L15.DWG

TOLERANCES UNLESS OTHERWISE SPECIFIED
PER ENGINEERING STANDARD ES- --

UNAUTHORIZED USE, MANUFACTURE OR
REPRODUCTION IN WHOLE OR IN PART IS
PROHIBITED. DRAWING, DESIGN AND
OTHER DISCLOSURES PROPERTY OF
EATON FILTRATION, LLC



EATON FILTRATION, LLC
 900 FAIRMOUNT AVENUE, ELIZABETH, NEW JERSEY 07207
 NAME
**6" TYPE "33-L" GAS/LIQUID
 SEPARATOR 150# FLG CSTL**

CUSTOMER:
 REG. NO.:
 P.O. NO.:
 TAG NO.:
 PART NO.: 633L150C, 633L150CU, & 633L150CM

DRAWN	GC	DATE	CHECKED	FJM	DATE	9/18/01	
APP	VH	DATE	SCALE	NTS	ECR	9826	
SIZE	DWG	NO	SD633L150C				REV
A							B