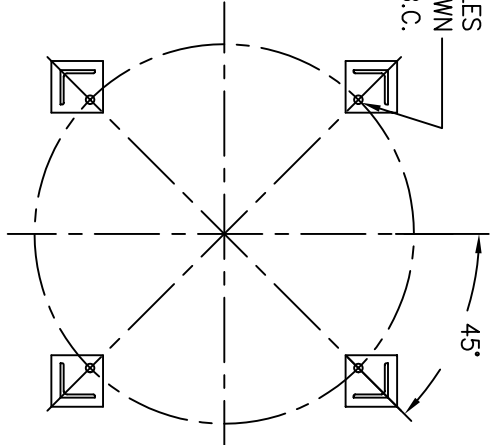


OUTLET
 (4) 1" ϕ [22 ϕ] BOLT HOLES
 LOCATED AS SHOWN
 ON 44.13 ϕ [1121 ϕ] B.C.

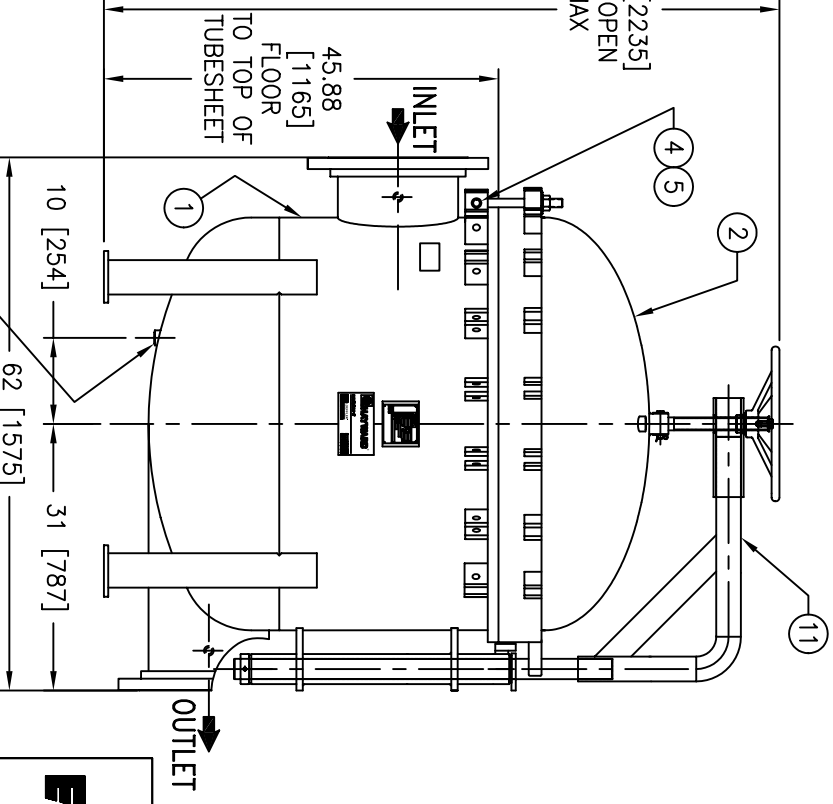
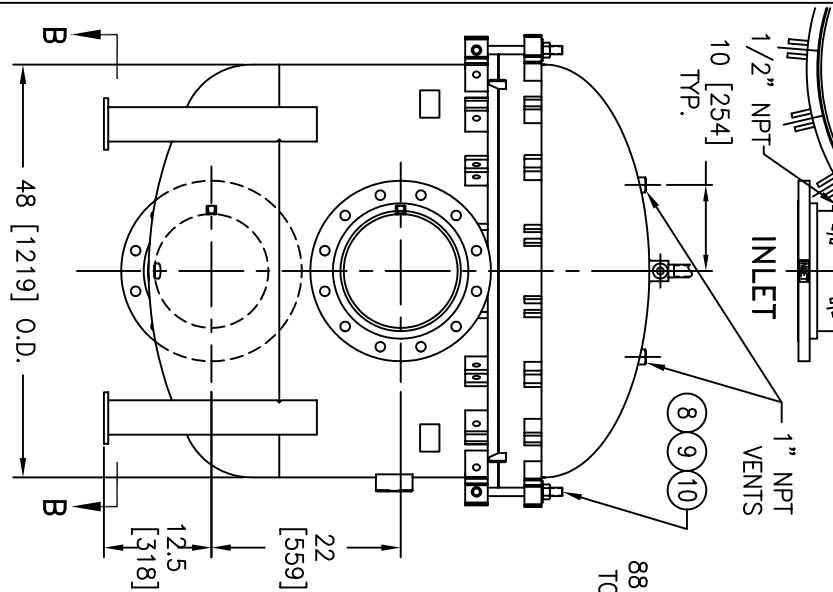


SECTION B-B

| ITEM | PART NAME | MATERIAL |
|------|---------------------|------------------|
| 1 | BODY | SA240 316/316L |
| 2 | COVER | SA240 316/316L |
| 3 | O-RING | BUNA-N |
| 4 | PIN | SA193 B7 ZINC PL |
| 5 | SNAP RING | STEEL ZINC PL |
| 6 | BASKET RESTRAINER | 316 SS |
| 7 | FILTER BAG RETAINER | 316 SS |
| 8 | EYE BOLT | SA193 B7 ZINC PL |
| 9 | HEX NUT | SA194 2H ZINC PL |
| 10 | WASHER | STEEL ZINC PL |
| 11 | DAVIT ASSEMBLY | CARBON STEEL |

NOTES:

1. UNITS ARE TO BE DESIGNED, FABRICATED & "U" STAMPED IN ACCORDANCE WITH ASME SECT. VIII, DIV. 1 BOILER & PRESSURE VESSEL CODE, IN COMPLIANCE TO LATEST ADDENDA.
2. INLET / OUTLET FLANGE CONNECTIONS PER ANSI B 16.5.
3. DESIGN PRESSURE: 150 PSI (MAMP)
 DESIGN TEMPERATURE 250° F.
 MDMT - -20° F @ 150 PSI.
4. ALL DIMENSIONS ARE IN INCHES / (MM).
5. ALL BOLT HOLES ARE TO STRADDLE NATURAL CENTERLINES.
6. APPROX. WEIGHT (DRY) 2445 LB. (1109 KG.)



CERTIFIED FOR:
 P.O. NO.:
 REG. NO.:
 QUOTE NO.:
 TAG NO.:
 VESSEL CODE: MBF-2002-AB10-140A-UT-11HD
 PART NUMBER: F3AV20000003

ELECTRONIC FILE NAME: HD2014TS.DWG
 REF. ECR D666 DATE 01/23/06
 UNAUTHORIZED USE, MANUFACTURE OR REPRODUCTION IN WHOLE OR IN PART IS PROHIBITED. DRAWING, DESIGN AND OTHER DISCLOSURES PROPERTY OF EATON FILTRATION, LLC

EATON
 900 FAIRMOUNT AVENUE, ELIZABETH, NEW JERSEY 07207
EATON FILTRATION, LLC
 NAME: MAXILINE MBF2002HD FILTER VESSEL
 14" INLET / TANGENTIAL OUTLET
 STAINLESS STEEL

| SIZE | DWG NO | DATE | REV |
|------|--------|----------|--------|
| A | | 12/28/00 | 6/1/01 |

HD2014TS