

E1FU Triple Certified Cable Glands

Increased Safety, Flameproof and Restricted Breathing

For All Types of IEC Armored Cables.

NEC/CEC:
Class I, Division 2, Groups A, B, C, D

ATEX/IECEX:
Ex d IIC
Ex e II
Ex nR II

ATEX/IECEX:
Zone 1 and 2 – 21 and 22
II 2 GD
IP66

Applications

- Cable gland certified for enclosures with the following protection modes:
 - Ex d flameproof IIB or IIC (as per §10.4.2 of IEC 60079-14) (Refer to the ATX Guide for Use of Electrical Products in Hazardous Locations)
 - Ex e increased safety
 - Ex nR restricted breathing
 - D dust environment
- Hazardous areas (gas and dust).
- Onshore and offshore.

Features

- Provides a flameproof (Type "d") seal on the cable inner bedding.
- Provides a gas tight seal permitting the compatibility of use with restricted breathing (Type "nR") equipment.
- Allows mechanical cable retention and earth continuity via the cable armor termination.
- Separate tightening actions for the inner
- The inner displacement seal and armor terminations are separate tightening actions providing maximum control over the pressure applied to the cable bedding.

- Reversible armor cone and AnyWay clamping ring arrangement facilitates remote make off and enables the cable to be disconnected from the equipment.
- Environmental/load retention seal is provided on the cable outer sheath.
- Stepped cone is suitable for SWA cables. Grooved cone is suitable for all other approved armored cables.

Standard Materials

- Body: nickel plated brass
- Seal: LSF (Low Smoke Fume) thermoplastic elastomer
 - Inner CDS system and LRS (Load Retention Seal) outer seal

Options

- Lead sheath version – Replace digit E1 with E2;
Example: 32E1FW5 - 32E2FW5
- Aluminum: replace last digit 5 with 1
- Shroud, locknut, earth tag, entry thread seal, serrated washers, adaptors and reducers: see *Cable Gland Accessories* pages.

NEC/CEC Certifications and Compliances

- cCSAus Certified: 1310517

Cable Gland Size	Metric Thread C	Catalog Numbers					Minimum Thread Length mm (in) E
		Standard Metric ①	Standard NPT Thread C	Standard NPT ①	Optional NPT Thread C	Optional NPT Thread ①	
20S/16	M20	20S16E1FU5	1/2	20S16E1FU0505	3/4	20S16E1FU0755	15.0 (0.59)
20S	M20	20SE1FU5	1/2	20SE1FU0505	3/4	20SE1FU0755	15.0 (0.59)
20	M20	20E1FU5	1/2	20E1FU0505	3/4	20E1FU0755	15.0 (0.59)
25S	M25	25SE1FU5	3/4	25SE1FU0755	1	25SE1FU1005	15.0 (0.59)
25	M25	25E1FU5	3/4	25E1FU0755	1	25E1FU1005	15.0 (0.59)
32	M32	32E1FU5	1	32E1FU1005	1-1/4	32E1FU1255	15.0 (0.59)
40	M40	40E1FU5	1-1/4	40E1FU1255	1-1/2	40E1FU1505	15.0 (0.59)
50S	M50	50SE1FU5	1-1/2	50SE1FU1505	2	50SE1FU2005	15.0 (0.59)
50	M50	50E1FU5	2	50E1FU2005	2-1/2	50E1FU2505	15.0 (0.59)
63S	M63	63SE1FU5	2	63SE1FU2005	2-1/2	63SE1FU2505	15.0 (0.59)
63	M63	63E1FU5	2-1/2	63E1FU2505	3	63E1FU3005	15.0 (0.59)
75S	M75	75SE1FU5	2-1/2	75SE1FU2505	3	75SE1FU3005	15.0 (0.59)
75	M75	75E1FU5	3	75E1FU3005	3-1/2	75E1FU3505	15.0 (0.59)
90	M90	90E1FU5	3-1/2	90E1FU3505	4	90E1FU4005	24.0 (0.94)
100	M100	100E1FU5	4	100E1FU4005	5	100E1FU5005	24.0 (0.94)
115	M115	115E1FU5	4	115E1FU4005	5	115E1FU5005	24.0 (0.94)
130	M130	130E1FU5	5	130E1FU5005	6	130E1FU6005	24.0 (0.94)

① Entry thread seal not supplied, see *Cable Gland Accessories and Tools*.

E1FU Triple Certified Cable Glands

Increased Safety, Flameproof and Restricted Breathing

For All Types of IEC Armored Cables.

NEC/CEC:
Class I, Division 2, Groups A, B, C, D

ATEX/IECEX:
Ex d IIC
Ex e II
Ex nR II

ATEX/IECEX:
Zone 1 and 2 – 21 and 22
II 2 GD
IP66

ATEX/IECEX Certifications and Compliances

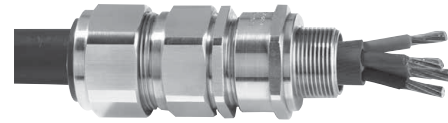
- Certification Type E1FU
 - Gas: Zones 1 and 2
 - Type of Protection: Ex d IIC Gb, Ex e IIC Gb, Ex nR IIC Gc
 - Dust: Zone 20
 - Type of Protection: Ex ta IIIC Da
- Conforming to ATEX 94/9/CE: II 2G 3G 1D
- Ambient Temperature: -60 °C to +130 °C (-76 °F to +266 °F)
- CE Declaration of Conformity: DC07001
- ATEX Certificate: Sira 13ATEX1071X, Sira 13ATEX4077X
- IECEX Certificate: IECEX SIR 13.0026X, IECEX SIM 14.0007X
- Other Certifications: cCSAus, KCC, CCOE/PESO (India)
- Marine Approval: LLOYDS, DNV, ABS
- Index of Protection according EN/IEC 60529: IP66
- Deluge Protection Compliance: DTS01:91 (option available on request only)

INMETRO Certification

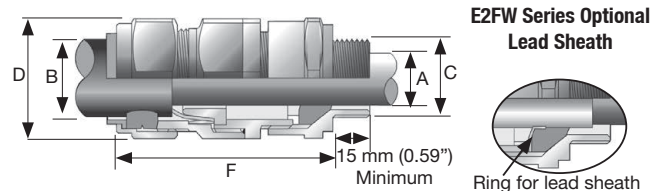
- INMETRO Certificate: TUV 12.0618X

EURASEC Certification

- TC RU C-GB.Г505.B.00138



Dimensions in Millimeters (Inches)



Cable Gland Size	Cable Bedding Diameter mm (in) A		Overall Cable Diameter mm (in) B		Across Flats mm (in) D	Across Corners mm (in) D	Nominal Protrusion Length mm (in) F	Optional PVC Shroud	Cable Gland Weight kgs (oz)
	Min	Max	Min	Max					
20S/16	3.1 (0.12)	8.6 (0.34)	6.1 (0.24)	13.2 (0.52)	24.0 (0.94)	26.4 (1.04)	58.5 (2.30)	PVC04	0.16 (5.64)
20S	6.1 (0.24)	11.6 (0.46)	9.5 (0.37)	15.9 (0.63)	24.0 (0.94)	26.4 (1.04)	58.5 (2.30)	PVC04	0.16 (5.64)
20	6.5 (0.26)	13.9 (0.55)	12.5 (0.49)	20.9 (0.82)	30.5 (1.20)	33.6 (1.32)	60.5 (2.38)	PVC06	0.22 (7.76)
25S	11.1 (0.44)	19.9 (0.78)	14.0 (0.55)	22.0 (0.87)	37.5 (1.48)	41.3 (1.63)	67.5 (2.66)	PVC09	0.35 (12.35)
25	11.1 (0.44)	19.9 (0.78)	18.2 (0.72)	26.2 (1.03)	37.5 (1.48)	41.3 (1.63)	67.5 (2.66)	PVC09	0.35 (12.35)
32	17.0 (0.67)	26.2 (1.03)	23.7 (0.93)	33.9 (1.33)	46.0 (1.81)	50.6 (1.99)	69.5 (2.74)	PVC11	0.48 (16.93)
40	22.0 (0.87)	32.1 (1.26)	27.9 (1.10)	40.4 (1.59)	55.0 (2.17)	60.5 (2.38)	78.0 (3.07)	PVC15	0.70 (24.69)
50S	29.5 (1.16)	38.1 (1.50)	35.2 (1.39)	46.7 (1.84)	60.0 (2.36)	66.0 (2.60)	75.5 (2.97)	PVC18	0.80 (28.22)
50	35.6 (1.40)	44.0 (1.73)	40.4 (1.59)	53.1 (2.09)	70.0 (2.76)	77.0 (3.03)	80.5 (3.17)	PVC21	0.83 (29.28)
63S	40.1 (1.58)	49.9 (1.96)	45.6 (1.80)	59.4 (2.34)	75.0 (2.95)	82.5 (3.25)	91.5 (3.60)	PVC23	1.42 (50.09)
63	47.2 (1.86)	55.9 (2.20)	54.6 (2.15)	65.9 (2.59)	80.0 (3.15)	88.0 (3.46)	92.0 (3.62)	PVC25	1.51 (53.26)
75S	52.8 (2.08)	61.9 (2.44)	59.0 (2.32)	72.1 (2.84)	89.0 (3.50)	97.9 (3.85)	99.0 (3.90)	PVC28	2.20 (77.60)
75	59.1 (2.33)	67.9 (2.67)	66.7 (2.63)	78.5 (3.09)	99.0 (3.90)	108.9 (4.29)	102.0 (4.02)	PVC30	2.77 (97.71)
90	66.6 (2.62)	79.9 (3.15)	76.2 (3.00)	90.4 (3.56)	114.0 (4.49)	125.4 (4.94)	120.0 (4.72)	PVC32	4.35 (153.44)
100	76.0 (2.99)	90.9 (3.58)	86.1 (3.39)	101.5 (4.00)	123.0 (4.84)	135.3 (5.33)	148.0 (5.83)	LSF33	4.75 (167.55)
115	86.0 (3.39)	97.9 (3.85)	101.5 (4.00)	110.3 (4.34)	133.4 (5.25)	146.7 (5.78)	169.0 (6.65)	LSF34	7.30 (257.5)
130	97.0 (3.82)	114.9 (4.52)	110.2 (4.34)	123.3 (4.85)	146.1 (5.75)	160.7 (6.33)	183.0 (7.20)	LSF35	8.60 (303.36)

HAZARDOUS LOCATION FITTINGS: ATEX/IECEX FLAMEPROOF CABLE GLANDS

