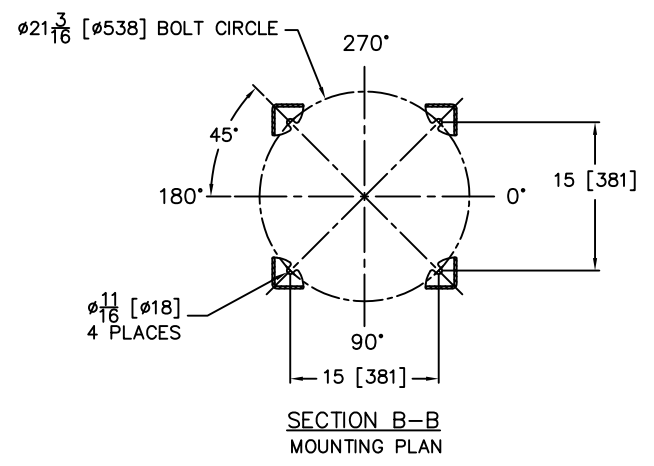
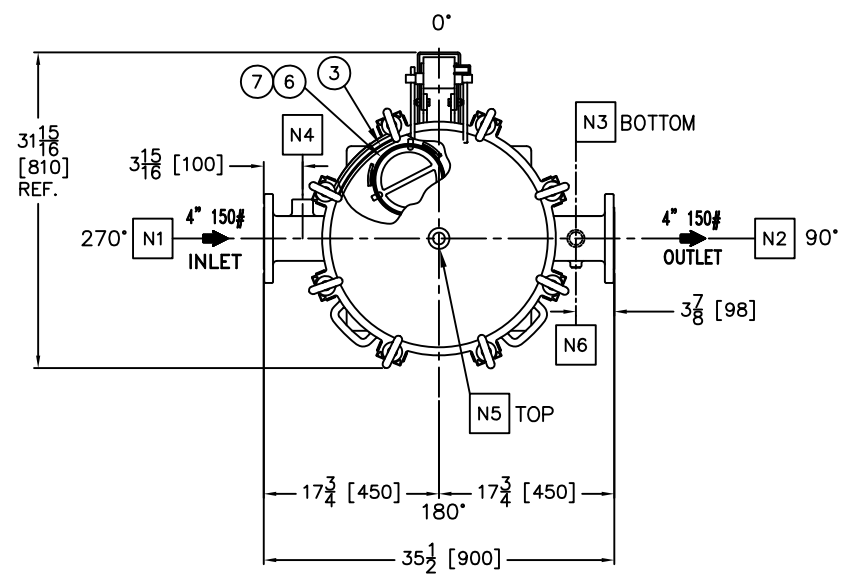
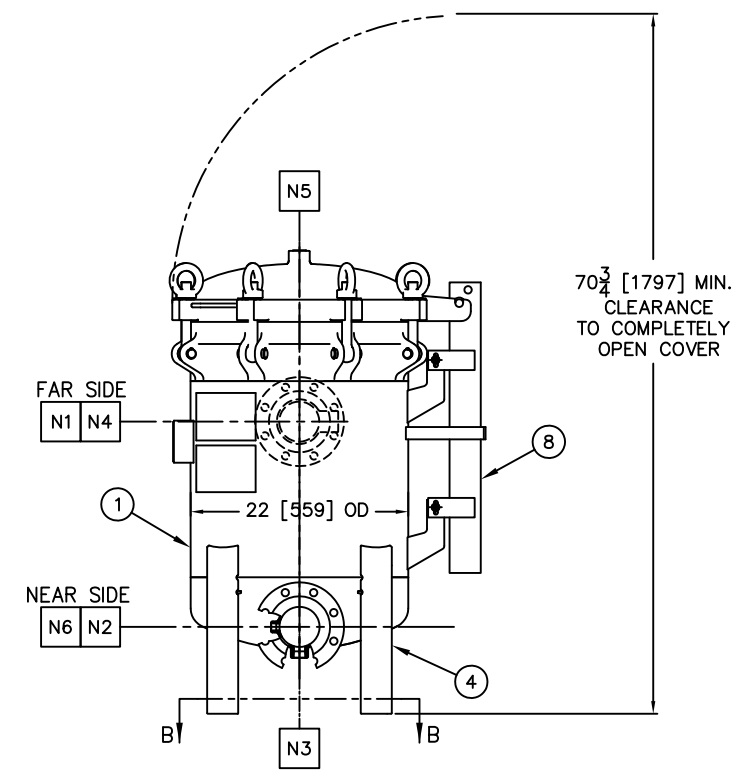
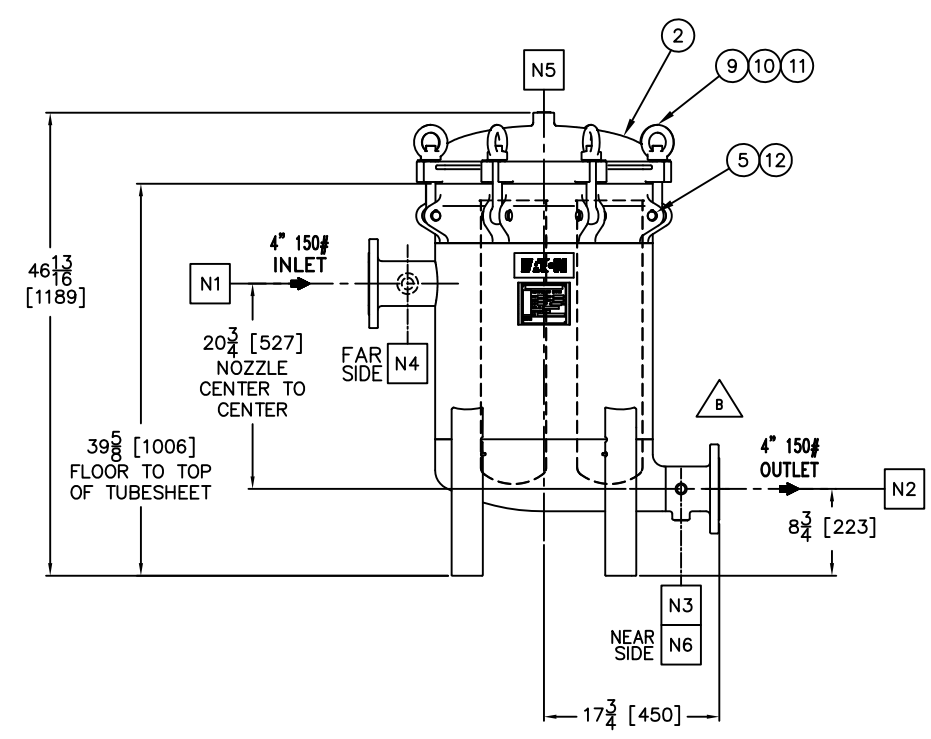


REVISIONS				
REV	DESCRIPTION	BY	ECO	DATE
A	NEW RELEASE	M. LEVIS	0104229	12/11/14
B	REVISED LUGS AND COVER, ADDED ITEM 12, CHANGED OUTLET GEOMETRY	M. LEVIS	0110380	4/27/2014
C	UPDATED DRAWING	FJM	0121687	4/4/16



NOTES:

- DIMENSIONS SHOWN IN [] ARE IN MILLIMETERS AND FOR REFERENCE ONLY. ACCEPTANCE OF THIS PART WILL BE BASED ON "INCH" UNITS & TOLERANCES ONLY.
- INLET / OUTLET FLANGE CONNECTIONS PER ANSI B16.5 AND ALL BOLT HOLES ARE TO STRADDLE NATURAL CENTERLINES.
- UNITS ARE DESIGNED AND FABRICATED TO GOOD ENGINEERING PRACTICE.
- DESIGN DATA:
 DESIGN PRESSURE - 150 PSI [10 BAR]
 DESIGN TEMPERATURE - 200° F [93° C]
 MDMT - -20° F [-28.9° C] @ 150 PSI [10 BAR]
 CORROSION ALLOWANCE - NONE
 RADIOGRAPHY - NONE
 HYDROSTATIC TEST PRESSURE - 195 PSI [13.4 BAR]
- APPROX WEIGHT (DRY): 496 LBS [225KG]
- APPROX SHIPPING WEIGHT: 542 LBS [246 KG]
- PART NO.: NAFTA - : F3AV0400018-304
- VESSEL CODE : NAFTA - : PMBF-0402-BB10-040A-NT-11HE
- UNIT ASSEMBLY DWG: L0003504
- THE SPARE PARTS FOR RE-ORDER.



ITEM	DRAWING NUMBER	DESCRIPTION
12		CIRCLIP
11		WASHER
10		RING NUT
9		EYE BOLT
8		SPRING ASSISTED MECHANISM
7		FILTER BAG HOLD DOWN P/N L0000584-304
6		RESTRAINER BASKET P/N L0003232
5		PIN
4		LEGS
3		O-RING P/N L0000292
2		COVER
1		BODY

PART LIST FOR: F3AV0400018-304

NOZZLE SCHEDULE						
MARK	QTY	SIZE	TYPE	RATING	NECK	SERVICE
N1	1	4	ANSI FLANGED	150	0.24 [6]	INLET
N2	1	4	ANSI FLANGED	150	0.24 [6]	OUTLET
N3	1	1	NPTI	---	NA	DRAIN
N4	1	1	NPTI	---	NA	INLET AUX CONN.
N5	1	1	NPTI	---	NA	VENT
N6	1	1/2	NPTI	---	NA	OUTLET AUX CONN.

CUSTOMER INFO	
NAME	
P.O. NO.	
TAG NO.	
S.O. NO.	
PART NO.	F3AV0400018-304

TOLERANCES (UNLESS OTHERWISE SPECIFIED)

DECIMAL: .X ± .030
.XX ± .010
.XXX ± .005

FRACTIONAL: ± 1/16
NOZZLE C TO FLOOR: 1/8" < 4' > 1/4"
FACE TO FACE: 1/8" < 4' > 1/4"
ANGULAR: ± 1'
FLANGES (H/V): ± 1/16"
VESSEL OVERALL HT: 1"

BOLT HOLES MUST STRADDLE C MACHINED PARTS TO BE FREE OF BURRS FOR ADDITIONAL TOLERANCE DETAILS REF. ES-211, ES-222 AND ES-223

REVIEWED FOR CLASSIFICATION PER PR-4

CRITICAL SIGNIFICANT

DRAWN BY
R. DHONDE

SCALE
AS DRAWN

RESTRICTION
RESTRICTED

SHEET
1 OF 1

PROJECTION
THIRD ANGLE

EATON EATON FILTRATION, LLC
DESIGN CENTER
ISELIN, NEW JERSEY, USA • PORTAGE, MICHIGAN, USA

TITLE
PROLINE 150 (PMBF-04) FILTER VESSEL TYPE HE 4" 150#
RF FLG INLET/TANGENTIAL OUTLET IN LINE STYLE SS-304

DATE 08/14/12 SIZE B DWG FILENAME F3AV0400018-304 REV C

EATON CORPORATION - CONFIDENTIAL AND PROPRIETARY NOTICE TO PERSONS RECEIVING THIS DRAWING AND/OR TECHNICAL INFORMATION INCLUDING THE DRAWING AND INFORMATION CONTAINED THEREON IS CONFIDENTIAL AND IS THE EXCLUSIVE PROPERTY OF EATON AT ANY TIME. BY TAKING THE POSSESSION OF THIS DOCUMENT THE RECIPIENT ACKNOWLEDGES AND AGREES THAT THIS DOCUMENT CANNOT BE USED IN ANY MANNER ADVERSE TO THE INTEREST OF EATON AND THAT NO PORTION OF THIS DRAWING MAY BE COPIED OR OTHERWISE REPRODUCED WITHOUT THE PRIOR WRITTEN CONSENT OF EATON, IN THE CASE OF CONFLICTION CONTRACTUAL PROVISIONS, THIS NOTICE SHALL GOVERN THE STATUS OF THIS DOCUMENT. 2016 EATON CORPORATION - ALL RIGHTS RESERVED.