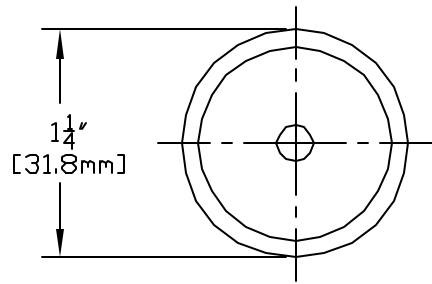
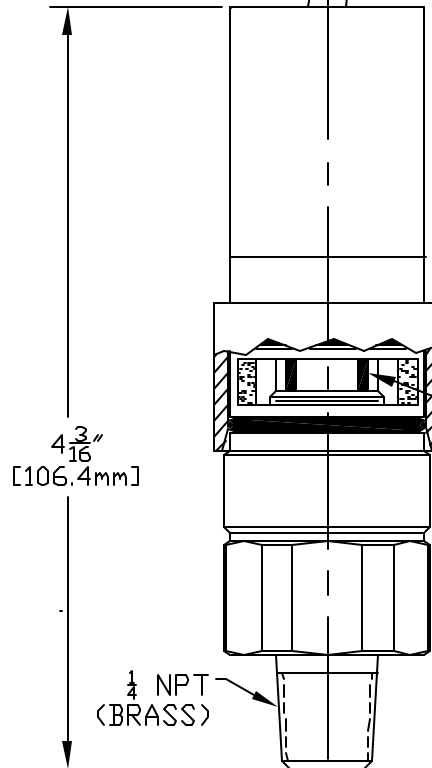


A-12928



WIRE COLOR CODING
 RED ——— N.O.
 BLACK ——— N.C.
 WHITE ——— COM.

FACTORY SEALED
 3 WIRE CABLE
 5 ft LG.



ADJUSTMENT ACCESS COVER,
 SLIDE UP TO OPEN.

SLOTTED ADJUSTMENT SCREW,
 TURN IN TO RAISE SET POINT.

MODEL NO.	ADJUSTABLE RANGE	
	psi	bar
10-G13	100 TO 1500	6.9 TO 103.4
10-G14	180 TO 3000	12.4 TO 206.8
10-G15	400 TO 4700	27.6 TO 324.1
10-G16	4000 TO 7500	275.8 TO 517.1

SPECIFICATIONS:
 UL RECOGNIZED, CSA CERTIFIED
 E/R: 5 AMPS 250 VAC

SYM	DESCRIPTION	DATE	DN	APPD
F	CHANGED MPa TO bar. ECN#E0044	10-23-02	S.R.	H.N.
E	ADDED MODEL 16 ECN#C8580	2/4/00	AB	LK
D	REVISED RANGES PER ECN#C5565	5-10-96	P.V.	L.K.
C	REV. HOUSING DIAPHRAGM ON "M" DWG. ECN#C4767	8-7-95	A.E.	L.K.
B	UPDATED NOTES ON "M" DWG. ECN#C4066	12-21-94	A.E.	G.F.Y.
A	FIRST ISSUE. ECN#C2216	3-10-93	A.E.	L.K.

ORIGINAL DATE	3-5-93
DRWN	A. EBALD
CHKD	PETER WEILER
APPD	L. KHATCHADORIAN

TITLE
 10-G
 SERIES
 (PISTON)

DF001D

 UNITED ELECTRIC
 CONTROLS COMPANY
 WATERTOWN * MASSACHUSETTS

REVISIONS

UNLESS OTHERWISE SPECIFIED
 DIMENSIONS ARE IN INCHES

SCALE FULL

DWG NO
 A-12928