



CIT 700

Multichannel Process Display with Datalogger, Contacts and Analogue Outputs

Functional range standard

- ▶ configuration of max. 60 channels via inputs, outputs, controller, profiles
- ▶ connection of channels via mathematical / logical functions
- ▶ 8 integrated PD / PI / PID controller

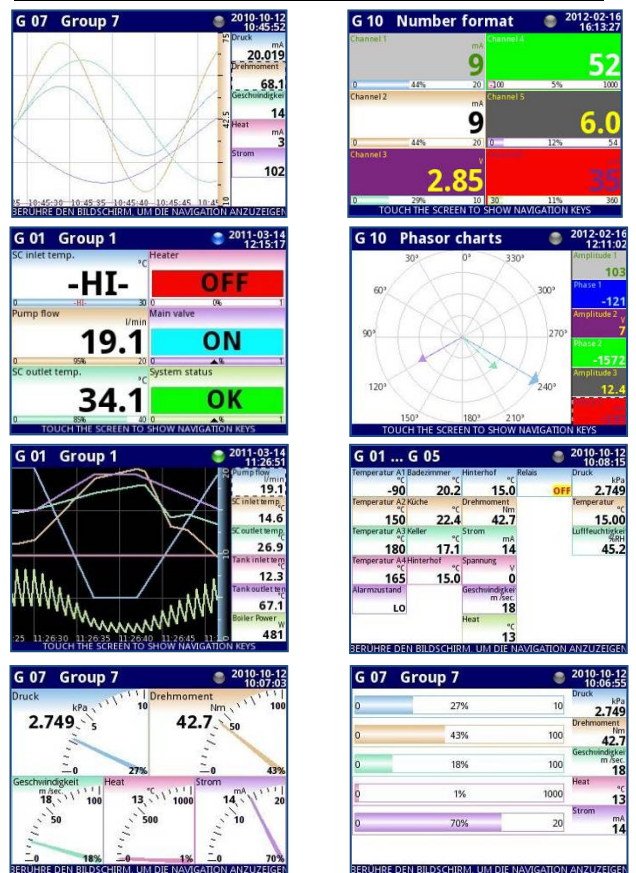
Datalogger

- ▶ logging of max. 60 channels
- ▶ 2 selectable measuring rates (max. 10Hz)
- ▶ extensive triggering functions
- ▶ internal memory 1,5 GB
- ▶ data transfer via USB stick / Ethernet


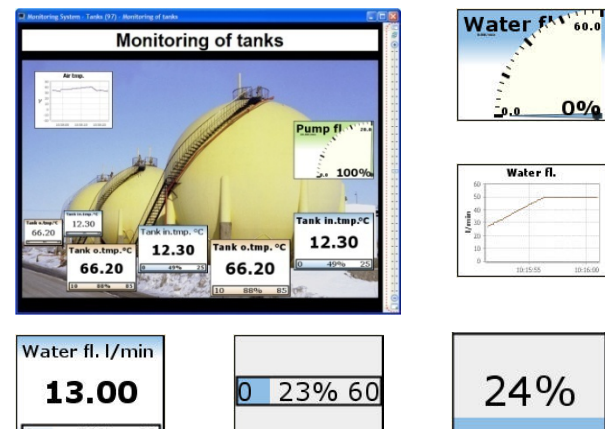
Product characteristics

- ▶ front panel housing 96 x 96 mm
- ▶ graphic 3,5" TFT monitor, touchscreen
- ▶ 3 free fittable slots, 22 different input / output modules
- ▶ transducer supply 24 V_{DC}
- ▶ communication interface:
3 x RS-485, 1 x RS-232, (Modbus RTU)
2 x USB-Host-Port,
Ethernet (Modbus TCP, Java Applets)

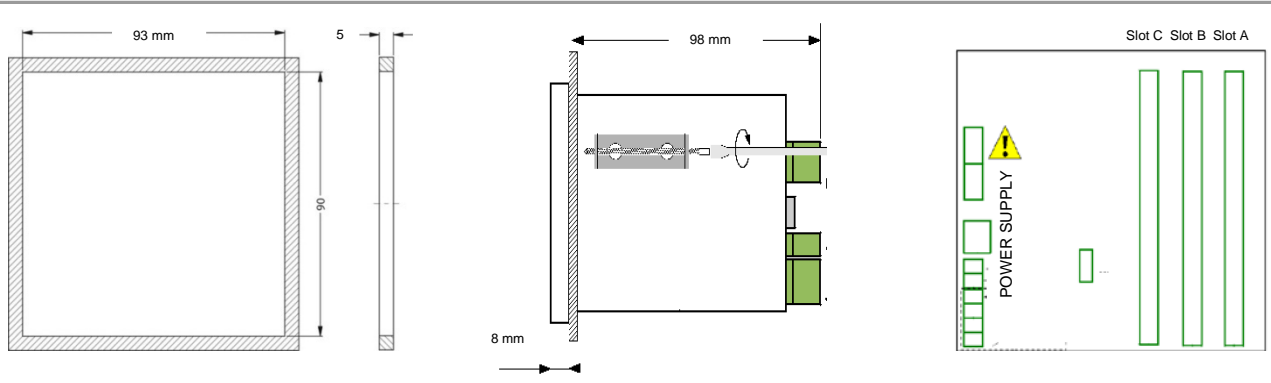
Display modes



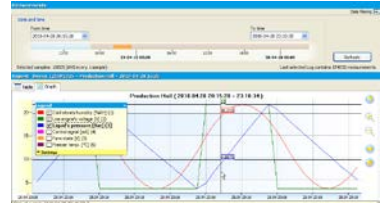


Signal input/output		
UI4, UI8, UI16, I16		
Description	4/8/16 current/voltage inputs with common ground	
Input range/Resolution	-2...13V / 1mV	-2...13V / 1mV
Measurement ranges	0...5V, 1...5V, 0...10V, 2...10V	0...5V, 1...5V, 0...10V, 2...10V
Accuracy	0,1% @25°C	0,1% @25°C
Overload/Impedance	20% / 100kΩ	20% / 100kΩ
IS6		
Description	6 current inputs, isolated	
Input range/Resolution	3...30mA / 1μA	
Measurement ranges	4...20mA	
Accuracy	0,25% @25°C	
Overload/Impedance	50mA-resettable fuse / 1750Ω@4mA, 400Ω@20mA	
TC4, TC8*		
Description	4/8 thermocouple inputs	
Input range/Resolution	-30...30mV / 1μV	-30...30mV / 1μV
Overload/Impedance	20% / 1MΩ	20% / 1MΩ
Measurement ranges	Typ: K, S, J, T, N, R, B, E, L(GOST), -25...25mV, -100...100mV	
RT4*		
Description	4 RTD inputs (resistance thermometer)	
Input range/Resolution	0...325Ω / 0,01Ω	0...325Ω / 0,01Ω
Measurement ranges	Pt100, Pt500, Pt1000, Pt'50, Pt'100, Pt'500, Cu50, Cu100, Cu'50, Cu'100, Ni100, Ni500, Ni1000, 0...300 Ω, 0...3kΩ, 2/3/4-wire	
UN3		
Description	3 universal inputs with galvanically isolation for current, voltage, thermocouples and RTDs	
Current/voltage inputs		
Input range/Resolution	-1...12V / 1mV	-2...30mA / 1μA
Measurement ranges	0...5V, 1...5V, 0...10V, 2...10V	0...20mA, 4...20mA
Accuracy	0,1% @25°C	0,1% @25°C
Overload/Impedance	20% / >100kΩ	20% / <65Ω
Thermocouple inputs*		
Input range/Resolution	-10...30mV / 2μV	-10...120mV / 4μV
Measurement ranges	Typ: K, S, J, T, N, R, B, E, L(GOST), -25...25mV, -100...100mV	
Overload/Impedance	20% / >1,5MΩ	20% / >1,5MΩ
RTD inputs*		
Input range/Resolution	0...325Ω / 0,01Ω	0...3250Ω / 0,1Ω
Measurement ranges	Pt100, Pt500, Pt1000, Pt'50, Pt'100, Pt'500, Cu50, Cu100, Cu'50, Cu'100, Ni100, Ni500, Ni1000, 0...300 Ω, 0...3kΩ, 2/3/4-wire	
D8, D16		
Description	8/16 binary inputs, each 4 inputs with common ground	
Input range	0...30V, U _{in} <1V = LOW, U _{in} >4V =HIGH	
Curr. consumption/Isolation	15mA(24V), 5mA(10V), 2mA(5V) / 500V	
Processing	8bit/2nibbles/1byte(D8), 16bit/4nibble/1integer(D16)	
F12, F14		
Description	2/4 current inputs with balance counter(flowmeter) + 2/4 standard-current inputs with common ground	
Input range/Resolution	-2...30mA / 1μA	
Measurement ranges	0...20mA, 4...20mA	
Accuracy	0,1% @25°C	
Overload/Impedance	20%, 50mA-resettable fuse / 100Ω	
Processing	Reset of counter: internal/external/autoreset	
FT2, FT4		
Description	2/4 tachometer/flowmeter inputs(quadrature pulse inputs) or 2/4 tachometer/flowmeter inputs(each with one pulse input and one programmable function input) + 2/4 standard-current inputs with common ground	
Pulse inputs		
Input range	0...30V, U _{in} <1V = LOW, U _{in} >5V =HIGH, 0,1Hz... 50kHz	
Curr. consumption/Isolation	12mA(24V) / 2kV	
Processing	Operation modes: tachometer + counter(up/down), reset of counter: internal/external/autoreset	
Current inputs		
Input range/Resolution	-2...30mA / 1μA	
Accuracy	0,1% @25°C	
Overload/Impedance	20%, 50mA-resettable fuse / 100Ω	
CP4		
Description	4 counters each with two pulse inputs with galvanically isolation, one programmable input and one reset input	
Input range	0...30V, U _{in} <1V = LOW, U _{in} >10V =HIGH, max. 5kHz	
Curr. consumption/Isolation	14mA(24V), 6mA(10V), 50mA-resettable fuse / 2kV	
Processing	Operation modes: A+B/A-B/ counter(up/down)/quadrature counter, reset of counter: internal/external/autoreset	

Remote-Desktop	Java Applets
	

Dimensions (in mm)



panel cut-out assembly back side

Accessories		
Licence key for datalogging capabilities	material number LK-700	Enables data logging capabilities of CIT 700 for max. 60 channels. For additional activating of function for already delivered CIT 700 serial number is necessary.
Software DAQ-Manager	 material number SW-DAQ	Program for displaying (table or graph), archiving, evaluation and export data stored on CIT 700 with enabled data logging capabilities. Data are imported via USB flashdrive or Ethernet. Export of the data is performed in CSV format. This software is included in scope of supply.
Lockable, transparent front door	 material number Z900002	Prevents damage of display and increases access protection.
Mini USB flasdrive 8 GB	 material number Z900024	Enables transfer of data and configuration between PC and CIT 700 (also with mounted front door).

© 2016 BD|SENSORS GmbH – The specifications given in this document represent the state of engineering at the time of publishing. We reserve the right to make modifications to the specifications and materials.

Ordering code CIT 700

CIT 700

SLOT A SLOT B SLOT C

□ - □□□ - □□□ - □□□ - □ - □ - □□□ - □□□

Basic version		SLOT A	SLOT B	SLOT C				
multichannel controller								
colour TFT display	1							
touchscreen								
Slot A / B / C		SLOT A	SLOT B	SLOT C				
empty		E 0 0	E 0 0	E 0 0				
4 x voltage input + 4 x current input		U I 4	U I 4	U I 4				
8 x voltage input + 8 x current input		U I 8	U I 8	U I 8				
16 x voltage input		U 1 6	U 1 6	U 1 6				
16 x current input		I 1 6	I 1 6	I 1 6				
6 current input (isolated)		I S 6	I S 6	I S 6				
8 binary input		D 0 8	D 0 8	D 0 8				
16 binary input		D 1 6	D 1 6	D 1 6				
4 x RTD input		R T 4	R T 4	R T 4				
4 x thermocouple input		T C 4	T C 4	T C 4				
8 x thermocouple input		T C 8	T C 8	T C 8				
3 x universal input		U N 3	U N 3	U N 3				
4 x pulse input		C P 4	C P 4	C P 4				
2 x current input (flowmeters)								
+ 2 x current input		F I 2	F I 2	F I 2				
4 x current input (flowmeters)								
+ 4 x current input		F I 4	F I 4	F I 4				
2 x puls input (flowmeters/ ratemeters)								
+ 2 x current input		F T 2	F T 2	F T 2				
4 x puls input (flowmeters/ ratemeters)								
+ 4 x current input		F T 4	F T 4	F T 4				
2 x analogue output			I 0 2	I 0 2				
4 x analogue output			I 0 4	I 0 4				
8 x SPST relay 1A			R 8 1	R 8 1				
4 x SPDT relay 5A				R 4 5				
8 x SSR output				S 0 8				
16 x SSR output				S 1 6				
Supply								
85 ... 260 V _{AC/DC}					1			
16 ... 35 V _{AC} / 19 ... 50 V _{DC}					2			
Communication interface								
RS-485 (Modbus RTU)						1		
USB host port (back side)							1	
RS-485 (Modbus RTU)								2
USB host port (front side)								
RS-485 (Modbus RTU)								
2x USB host port								3
3 x RS-485 / RS-232								
2 x USB host port								
1 x Ethernet 10 Mbit/s								
RS-485 (Modbus RTU)								
2 x USB host-port								5
1 x Ethernet 10Mbit/s								
Display foil								
neutral							1 0 0	
customer							9 9 9	consult
Special version								
standard							0 0 0	
customer							9 9 9	consult
accessories								
Licence Key for Datalogger							LK-700	
Software DAQ-Manager							SW-DAQ	
lockable, transparent door							Z900002	
Mini USB Stick 8 GB							Z900024	

© 2016 BD|SENSORS GmbH - The specifications given in this document represent the state of engineering at the time of publishing. We reserve the right to make modifications to the specifications and materials.

28.04.2016

