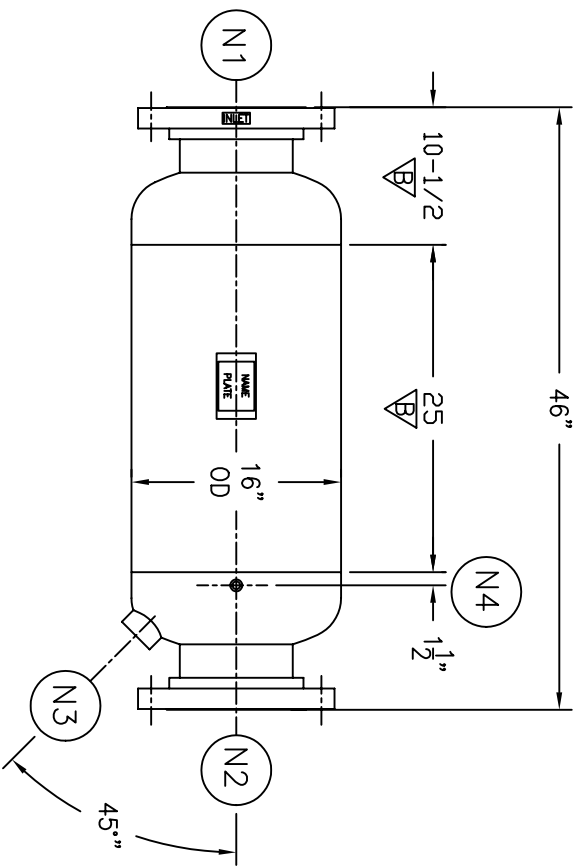


NOZZLE SCHEDULE		DESCRIPTION
ITEM	QTY.	NAME
N1	1	INLET 8"-150# RFSO ASME B16.5
N2	1	OUTLET 8"-150# RFSO ASME B16.5
N3	1	DRAIN 2" NPT 3000# HALF COUPLING
N4	1	VENT 1/2" NPT 3000# HALF COUPLING

REV	DATE	CHANGE	ECR	BY	APP
A	10/01/02	NEW ISSUE	A900	GC	FJM
B	9/29/05	REVISED C.A. FROM 0" TO 1/16"	D452	GO	LH
C	11/1/05	REVISED TITLE BLOCK	D507	FM	LH



NOTES:

- UNITS ARE TO BE DESIGNED, FABRICATED & "U" OR "UM" STAMPED (IF REQ'D) IN ACCORDANCE WITH ASME B & PV CODE, SECTION VIII, DIVISION 1 IN COMPLIANCE TO CURRENT PUBLISHED ADDENDA.
- ALL DIMENSIONS ARE IN INCHES.
- ALL BOLT HOLES ARE TO STRADDLE NATURAL CENTERLINES.
- SHIPPING WEIGHT: 375 POUNDS.
- DESIGN DATA:
 DESIGN PRESSURE- 150 PSIG
 DESIGN TEMPERATURE- 450° F
 MIN. DESIGN METAL TEMP.- -20° F @ 150 PSIG
 HYDROTEST PRESSURE- 195 PSIG
 CORROSION ALLOWANCE- 1/16 INCHES ∇
- MATERIAL: CARBON STEEL.

ELECTRONIC FILE NAME:
SD831L15C.DWG

TOLERANCES UNLESS OTHERWISE SPECIFIED
PER ENGINEERING STANDARD ES- --

UNAUTHORIZED USE, MANUFACTURE OR
REPRODUCTION IN WHOLE OR IN PART IS
PROHIBITED. DRAWING, DESIGN AND
OTHER DISCLOSURES PROPERTY OF
EATON FILTRATION, LLC

		EATON FILTRATION, LLC 900 FAIRMOUNT AVENUE, ELIZABETH, NEW JERSEY 07207					
		NAME 8" TYPE "31-L" GAS/LIQUID SEPARATOR 150# FLG (CSTL)					
DRAWN	GC	DATE	9/27/02	CHECKED	VA	DATE	9/27/02
APP	FJM	DATE	9/27/02	SCALE	NTS	ECR	A900
SIZE	DWG	NO		SD831L15C		REV	C

CUSTOMER:
REG. NO.:
P.O. NO.:
TAG NO.:
PART NO.: 831L150C/U/M