

**INSTALLATION INSTRUCTIONS FOR FD SERIES FLUORESCENT FIXTURES**

**IMPORTANT:** This fixture is designed for permanent installation in Clas I, Div. 2 and wet locations in accordance with the National Electric Code and all applicable local codes.

- DO NOT OPEN OR REMOVE FIXTURE WHILE IT IS ENERGIZED.
- DO NOT USE FIXTURE ON UN-GROUNDED CIRCUITS. Failure to ground this fixture can result in an electrical shock which may be fatal.
- Do Not use in areas of limited ventilation or in high ambient areas (above 40 deg. C).
- Lens should be cleaned periodically for high light output.

**CEILING MOUNT. SEE FIGURE 1.**

**1(a).** Attach the mounting brackets to the brass studs on the fixture.

**(b).** In case of hook and chain mounting option, use the ceiling brackets to connect the fixture to the chain.

**PENDANT MOUNT. SEE FIGURE 3 & 4.**

**2.** Remove lens from enclosure by opening latches. Snap off one side of reflector to ensure that conduit hub is securely engaged with locknut.

**3.** Install the fixture housing in accordance with local building code and all applicable local codes.

**4.** Pull supply wires through conduit system and into the lighting fixture. Use supply wire rated at least 60°C.

**5.** Hinge the reflector to one side by detaching the springs from one side of the fixture housing. Refer to FIGURE 2- conduit hub installed.

**WIRING**

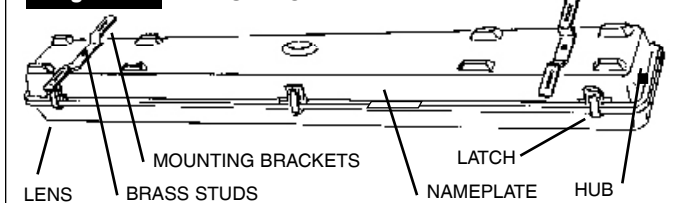
- Ground wire, if present, should be secured to green grounding screw in fixture housing.
- Connect the black and white leads from conduit to proper ballast leads.
- If fixture contains an optional terminal block, connect the black, white and the grounding lead from conduit to proper terminals on the terminal block.
- Note: The wire range for the terminal block is #8—#18AWG. Terminal block lugs to be tightened to 12 in. lb.

**Note:** Terminal block positions are labeled.

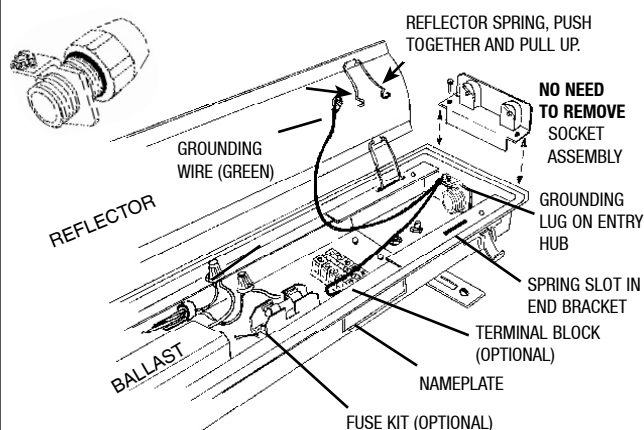


- Close the reflector by pushing the reflector springs together and putting ends of springs into slots in fixture end brackets. Push reflector inward onto end brackets to secure in place.
- 6.** Install lamps, checking both lamp type and wattage for proper lamp.
- 7.** Install the lens, by closing the latches until lens is fully seated against the fixture gasket. (Dimensions on pg. 2)

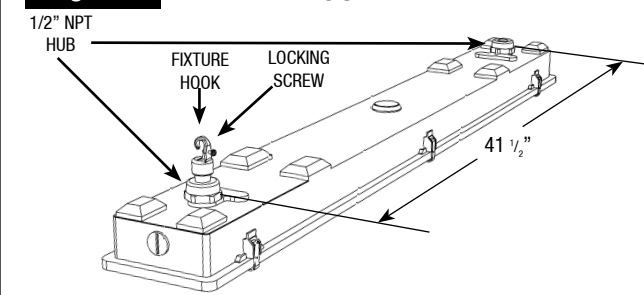
**Figure 1** FIXTURE OVERVIEW



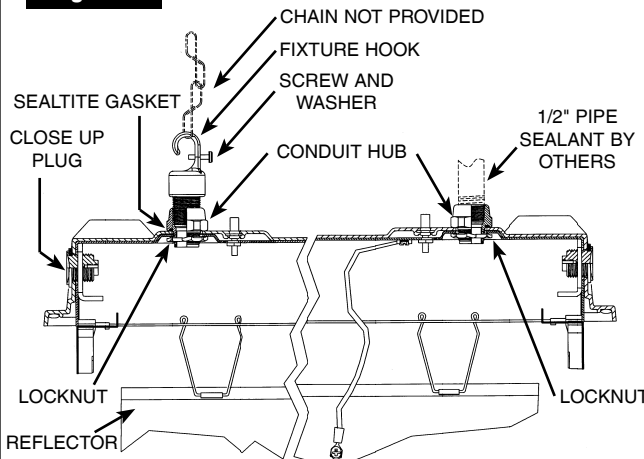
**Figure 2** 1/2" NPT Hub with Grounding Lug.



**Figure 3** PENDANT MOUNT



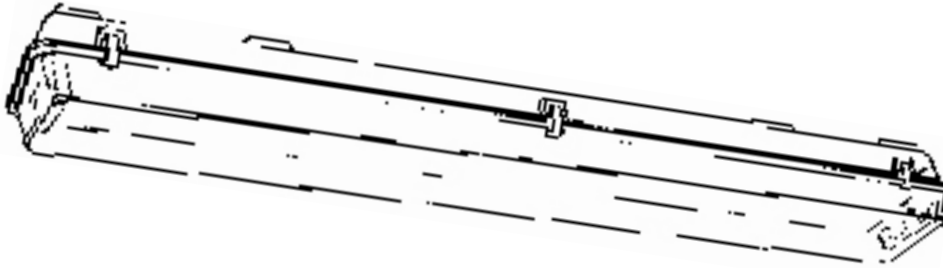
**Figure 4** PENDANT MOUNT



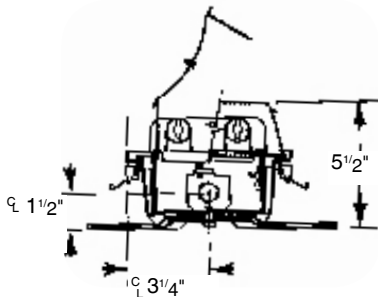
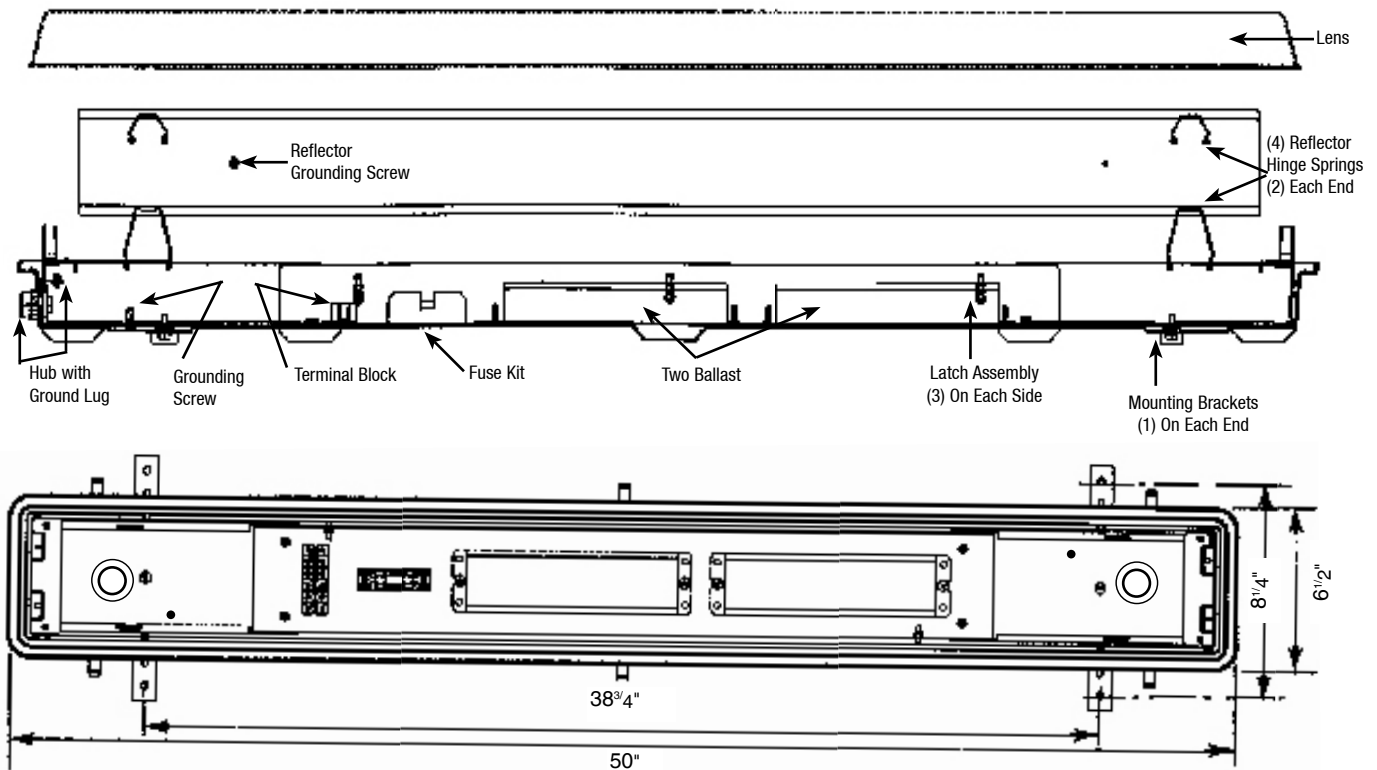
## Four Foot, Two Lamp, Non-Metallic Fluorescent Lighting Fixtures For Class I, Division 2, Class I, Zone 2 and Wet Locations

Rated for Wet-Locations only when using Acrylic Lens, Catalog Number FLENS.

Rated at IP 65, Dust-Proof and Jet Water-Proof, only when using Polycarbonate Lens, Catalog Number FPLENS.



### STANDARD TWO BALLAST FIXTURE



#### Standard Materials

- **Housing:** Fiberglass reinforced polyester.
- **Lens :** •-Acrylic (General Usage)  
•-Polycarbonate Lens must be used for IP65 Rating
- **Gasket:** Non-Thixotropic Polyol.
- **Hubs:** Die cast aluminum (1/2" NPT).
- **Lampholders:** Polycarbonate.
- **Cord Connector:** Polyamide

#### Standard Finishes

- **Housing:** White color finish.
- **Latches:** White color finish.

#### Compliances

- FD Series:**
- Class I, Division 2,
  - Class I, Zone 2, and
  - Wet-Locations.

All statements, technical information and recommendations herein are based upon data and tests believed to be reliable. The accuracy or completeness of such data or test results are not guaranteed. Pursuant to EGS Electrical Group - Appleton Electric, LLC Terms and Conditions of Sale, because Appleton Electric, LLC neither knows nor controls the applications or conditions in which the product will be used, purchaser must determine the appropriateness for the intended use of the product in such applications or conditions.