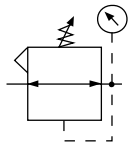


# Regulator R39

= "Most Popular"



Relieving



**R39-06-F000**

## Features

- Balanced Valve Design
- Solid Central Piston for Extended Life
- 3/4" and 1" NPT Ports
- Port Blocks Available for BSPP Thread and 1-1/2" Port

## Specifications

Flow Capacity*	3/4	200 SCFM (94.4 dm <sup>3</sup> /s)
	1	300 SCFM (141.6 dm <sup>3</sup> /s)
Adjusting Range Pressure	0 to 125 PSIG (0 to 8.6 bar)	
Gauge Port	1/4	
Maximum Supply Pressure	250 PSIG (17.2 bar)	
Operating Temperature	32° to 175°F (0° to 80°C)	
Port Size	NPT	3/4, 1
Weight	lb. (kg)	6.2 (2.8)

\* Inlet pressure 100 PSIG (6.9 bar). Secondary pressure 90 PSIG (6.2 bar).

## Materials of Construction

Body	Aluminum
Cap & Bonnet	Aluminum
Knob	Plastic
Piston	Plastic
Poppet Assembly	Brass / Nitrile
Springs	Steel
Seals	Nitrile

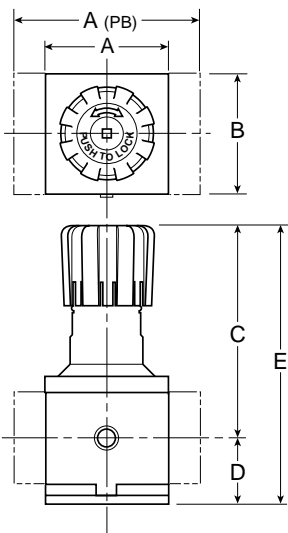
### WARNING

**Product rupture can cause serious injury.  
Do not connect regulator to bottled gas.  
Do not exceed maximum primary pressure rating.**

## CAUTION:

**REGULATOR PRESSURE ADJUSTMENT** – The working range of knob adjustment is designed to permit outlet pressures within their full range. Pressure adjustment beyond this range is also possible because the knob is not a limiting device. This is a common characteristic of most industrial regulators, and limiting devices may be obtained only by special design.

For best performance, regulated pressure should always be set by increasing the pressure up to the desired setting.



## Dimensions

Model	Inches (mm)	A	A(PB)	B	C	D	E
Standard Unit R39-XX-F000		3.62 (92)	5.91 (150)	3.62 (92)	6.38 (162)	2.08 (53)	8.46 (215)

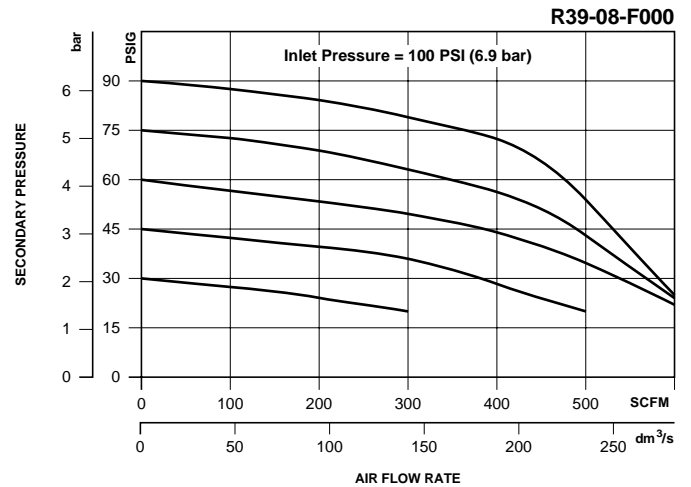
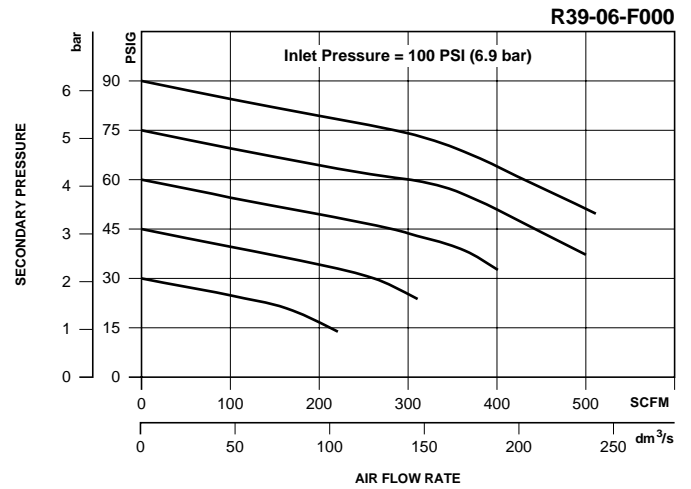
= "Most Popular"

### Replacement Kits

- Service Kit –  
 Relieving..... P3NKA00RR  
 Non-relieving ..... P3NKA00RN
- Spring, Regulating –  
 1 to 60 PSIG (0.06 to 2.1 bar) ..... C10A1304  
 2 to 125 PSIG (0.13 to 8.6 bar)..... C10A1308  
 5 to 250 PSIG (0.34 to 17.2 bar) ..... C10A1317

### Accessories

- Control Knob .....P3NKA00PN
- Gauge, Pressure –  
 0 to 60 PSIG (0 to 4 bar), 2" Dial Face,  
 1/4" NPT, CBM .....K4520N14060  
 0 to 160 PSIG (0 to 11 bar), 2" Dial Face,  
 1/4" NPT, CBM ..... K4520N14160  
 0 to 300 PSIG (0 to 20 bar), 2" Dial Face,  
 1/4" NPT, CBM .....K4520N14300  
 0 to 160 PSIG, 1-3/4" Digital Round,  
 1/4" NPT ..... K4517N14160D
- Mounting Bracket Kit ..... P3NKA00MW



**B**  
 Filters, Regulators, Lubricators

### Ordering Information

Model Type	Port Size	Without Gauge 2 to 125 PSI (0.13 to 8.6 bar)
Relieving	3/4	R39-06-F000
	1	R39-08-F000

**Options** - To order an option supplied with the unit model, add the appropriate coded suffix letter in the designated position of the model number.