



Phone: 1-800-441-4242 Fax: 913-354-1111  
 E-Mail: filtration@eaton.com  
 Web: www.eaton.com

### Model 2596 Automatic Strainer

#### MODEL 2596 AUTOMATIC STRAINER IO&M SUPPLEMENT (Items Below Replace Corresponding Items in Model 2596 IO&M)

**Read all instructions before installation or operation of equipment. Failure to comply with these instructions could result in bodily injury or property damage.**

#### Installation

2. Be sure sufficient headroom is provided for removal of internal parts. See Sales Drawing for removal clearance.  
NOTE: Clearance for rigging equipment must also be considered.
3. Support the filter in the line as follows:  
  
Fabricated filters are provided with mounting feet. The footpads are drilled to accommodate the use of anchor bolts. Place the filter in the line on concrete or steel mounts. **Do not** support the filter, or the piping coming to and from the filter, by the line flanges and flange bolting. See Figure 1 Supplement and Sales Drawing.
10. The NPT coupling under the outlet pipe could be used for a clean side drain line. See Figure 1 Supplement.
11. Attach the blow-off/drain line to the NPT coupling in the center of the bottom head. See Figure 1 Supplement. Install a ball, gate or plug valve in this line. Keep this valve closed except when necessary to drain the strainer or blow-off debris settled on the bottom.
12. Attach the backwash line to the side flanged opening. It is important to prevent backpressure by having a short, free-flowing backwash line with no vertical risers and a minimum of bends.

#### Removal of Cover & Operating Mechanism Assembly

3. Loosen swing bolt nuts and swing bolts to clear blocks.
4. Lift the cover assembly gently, using the lifting lugs on the cover. These lifting lugs are for the cover assembly.

**NOTE: See Installation, Item 1 to lift filter.**

All internal parts may now be inspected for deterioration, wear or blockage and replaced or repaired as necessary. Inspection should include the element and bushing. The replacement procedures for the reducer, motor and filter are contained herein.

#### Replacement or Maintenance of Filter Element (Totally revised as follows:)

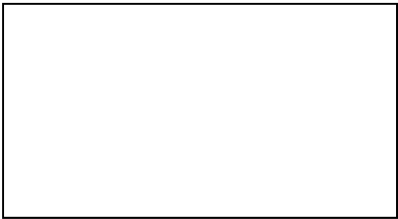
#### Replacement or Maintenance of Element & Backwash Arm Bushing (See Figure 1 Supplement)

The Hayward Model 2596 is furnished with a removable element secured to a support ring by four roll pins. The support ring is secured to the cover by four bolts, washers and locknuts.

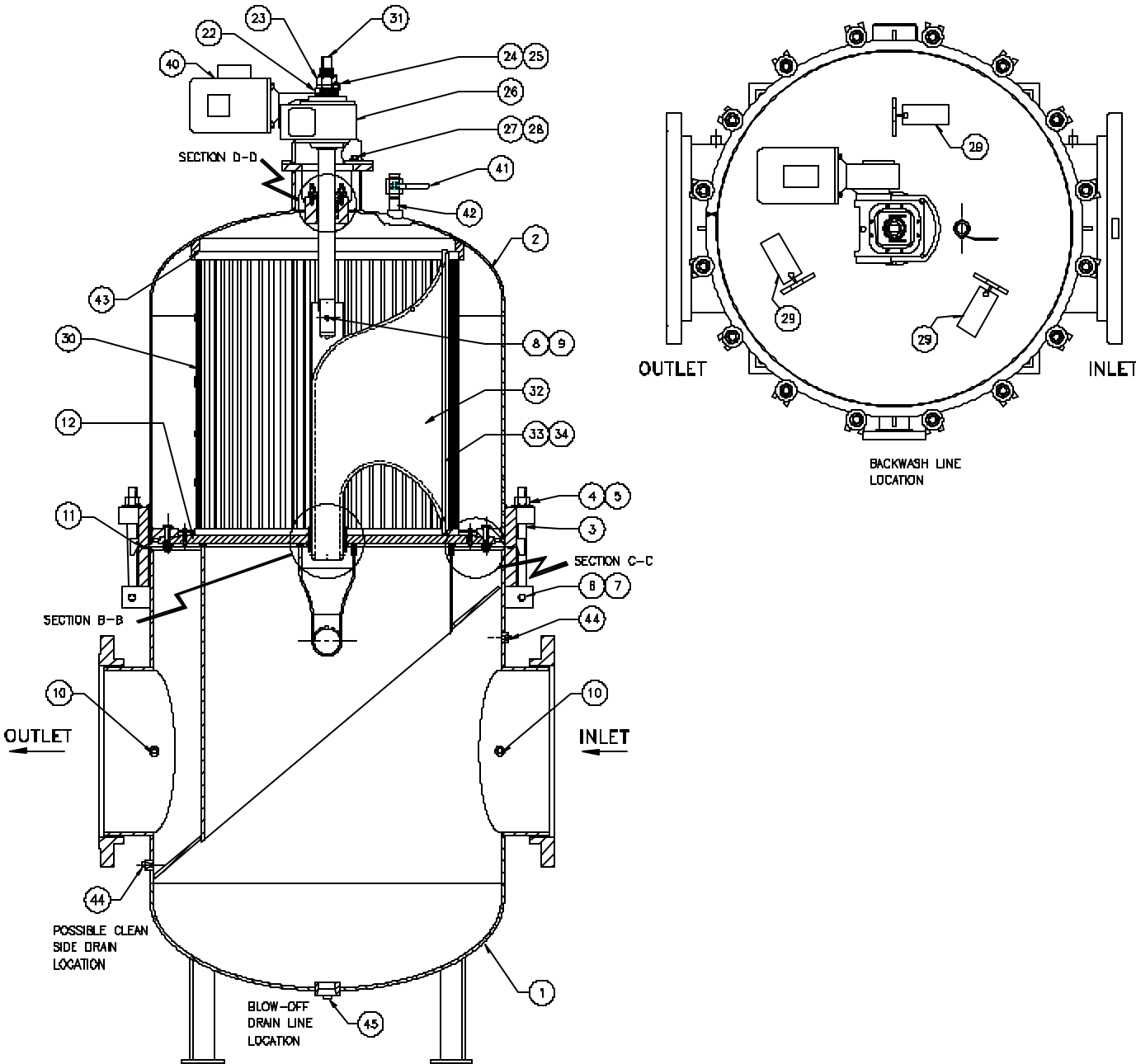
1. Refer to **Removal of Cover & Operating Mechanism Assembly**, page 7.
2. Lift the cover assembly from the body and lower cover assembly to supports placed under support ring. Remove the four bolts between the support ring and cover, and then lift the cover assembly.
3. Inspect the element, sealing surfaces and bushing located at bottom of backwash arm. Clean element & sealing surfaces as required. Remove existing element by removing the roll pins. Replace element by aligning the element tab holes with the support ring holes and replace the roll pins. Replace backwash arm bushing as required.
4. Lower the cover & backwash arm assembly into the center of the support ring/element assembly. Secure cover to support ring with bolts, washers & locknuts.
5. Lift cover assembly and place into body.
6. Before tightening swing bolts, rotate manually to insure freedom from binding. See "Manual Operation of Backwash Arm" page 7, Steps 2 - 10.
7. Align cover and body bolt blocks and secure with swing bolts.
8. Connect the electrical leads to the motor. Please note that the direction of rotation is not important.
9. Install fuses and connect power source.
10. The unit is now ready for operation.
11. Refer to "Start-Up" procedures on page 5.

**These sections are to be deleted from IOM 2596:**

**Pilot Bushing & Housing Replacement (p. 10),  
Figure 5 (p. 11), Figure 6 (p. 12) and Page 13**



(Items Below Replace Corresponding Items in Model 2596 IO&M)



CROSS SECTIONAL VIEW  
FIGURE 1 SUPPLEMENT



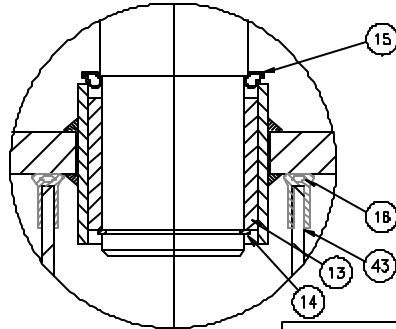
# Eaton Filtration, LLC

11 00 ] ^ ÀÚc^^ cÁv d } Ácá• É• RÁi ï G  
 Phone: 1 HGGFGI i €€ Fax: 9í GÉí Hí €í  
 E-Mail: filtration@eaton.com  
 Web: www.eaton.comÉá cæí }

IO&M Supplement

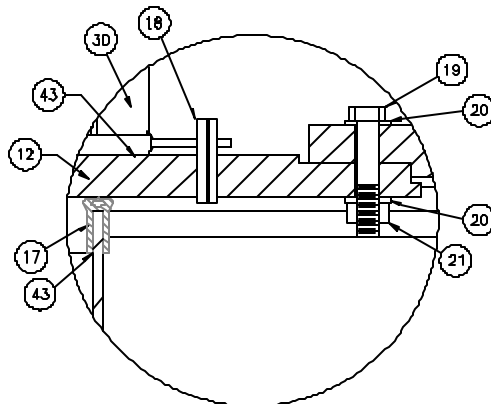
## Model 2596 Automatic Strainer

(Items Below Replace Corresponding Items in Model 2596 IO&M)

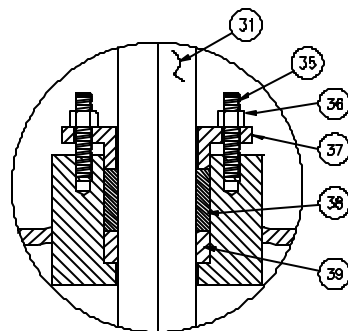


SECTION B-B

Item 14 –  
18”-24” sizes only



SECTION C-C



SECTION D-D

### LIST OF MATERIALS

ITEM	QTY.	NAME
1	1	BODY
2	1	COVER
3	16	EYE BOLT
4	16	HEX NUT
5	16	WASHER
6	16	EYE BOLT PIN
7	32	RETAINING RING
8	2	NUT FOR B/W PIN
9	1	PIN B/W ARM
10	2	PROTECTOR CAP
11	1	O-RING (GIRTH FLANGE)
12	1	SUPPORT RING
13	1	B/W ARM BUSHING
14	1	RING
15	1	GROMMET
16	1	EXTRUSION, SMALL RING
17	1	EXTRUSION, LARGE RING
18	4	ROLL PIN
19	4	HEX HEAD CAP SCREW
20	8	WASHER
21	4	LOCKNUT
22	1	SPACER
23	1	NUT W/NYLOK INSERT
24	1	DRIVE PIN
25	2	DOTTER PIN
28	1	GEAR REDUCER
27	4	HEX HEAD CAP SCREW
28	4	LOCK WASHER
29	3	NO LIFT TAG
30	1	ELEMENT
31	1	BACKWASH SHAFT
32	1	BACKWASH ARM
33	1	B/W ARM ORIFICE PLATE
34	16	SCREW
35	4	STUD, CONTINUOUS THREAD
36	4	NUT HEX JAM
37	1	PACKING GLAND
38	1	PACKING SET
38	1	BUSHING
40	1	MOTOR
41	1	BALL VALVE
42	1	NIPPLE
43	A/R	MARINE SEALANT
44	2	PIPE PLUG – 1/2” NPT
45	1	PIPE PLUG – 2” NPT

### RECOMMENDED SPARE PARTS

ITEM	QTY.	NAME
9	2	PIN B/W ARM
11	1	O-RING (GIRTH FLANGE)
13	1	B/W ARM BUSHING
30	1	ELEMENT
38	1	PACKING SET
39	1	BUSHING
43	1	MARINE SEALANT

WHEN ORDERING SPARE PARTS, BE SURE TO SPECIFY ALL NAMEPLATE DATA AS WELL AS DESCRIPTION AND QUANTITY OF PARTS.

THIS UNIT HAS BEEN HYDROSTATICALLY TESTED PRIOR TO SHIPMENT FROM OUR PLANT IN ELIZABETH, NEW JERSEY.

HAYWARD INDUSTRIAL PRODUCTS, INC. CANNOT BE RESPONSIBLE FOR DAMAGES TO SEALS, SEALING SURFACES, ETC., DUE TO SUBSEQUENT HANDLING AND/OR COVER REMOVAL AND REPLACEMENT.