

Enclosed Laboratory Filtration System BECO INTEGRA® LAB 140 P

Versatile, Sanitary Design Laboratory Depth Filtration System

BECO INTEGRA LAB 140 P is an enclosed single-sheet depth filtration system with a wide range of accessories for small volume filtration tasks in laboratories and research centers. The areas of application include small batches and upscaling in biotechnology and pharmaceutical, chemical, and cosmetics industries.

Special Features

- **Simple and clearly arranged design** with many connection, valve, and pressure measurement options.
- An O-ring sealing ensures a **high level of safety** by preventing leakage to the surrounding atmosphere.
- Ergonomic design for **easy handling**. Effortless replacement of BECO® depth filter sheets; thorough and **easy cleaning**, no dead spaces.
- **Variable application possibilities** by using the base filter and sludge chambers of various size (with and without heating) for sheet and cake filtration.
- System components enable **parallel or step filtration** processes using one arrangement of several filters.

Other models and enhancements with additional components for complete systems are possible according to requirements.



Technical Data

Max. permissible operating pressure:	87 psi (600 kPa/6 bar)
Max. permissible differential pressure:	58 psid (400 kPa/4 bar)
Max. permissible operating temperature:	284°F (140°C)
Depth filter size:	Ø 5.9", 0.08–0.16" thick (Ø 140 mm, 2–4 mm)
Filter area:	20.15 in ² (130 cm ²)
Weight LAB 140 P:	13.89 lbs (6.3 kg)

Material

Product contacting parts:	Stainless steel AISI 316L/ AISI 316Ti
Others:	Stainless steel AISI 304
Gaskets, O-rings:	EPDM, Silicone, Viton, FEP coated

Connections

Filter inlet:	DN 8 , Tri-Clamp, ISO 2852
Filter outlet:	DN 8 , Tri-Clamp, ISO 2852



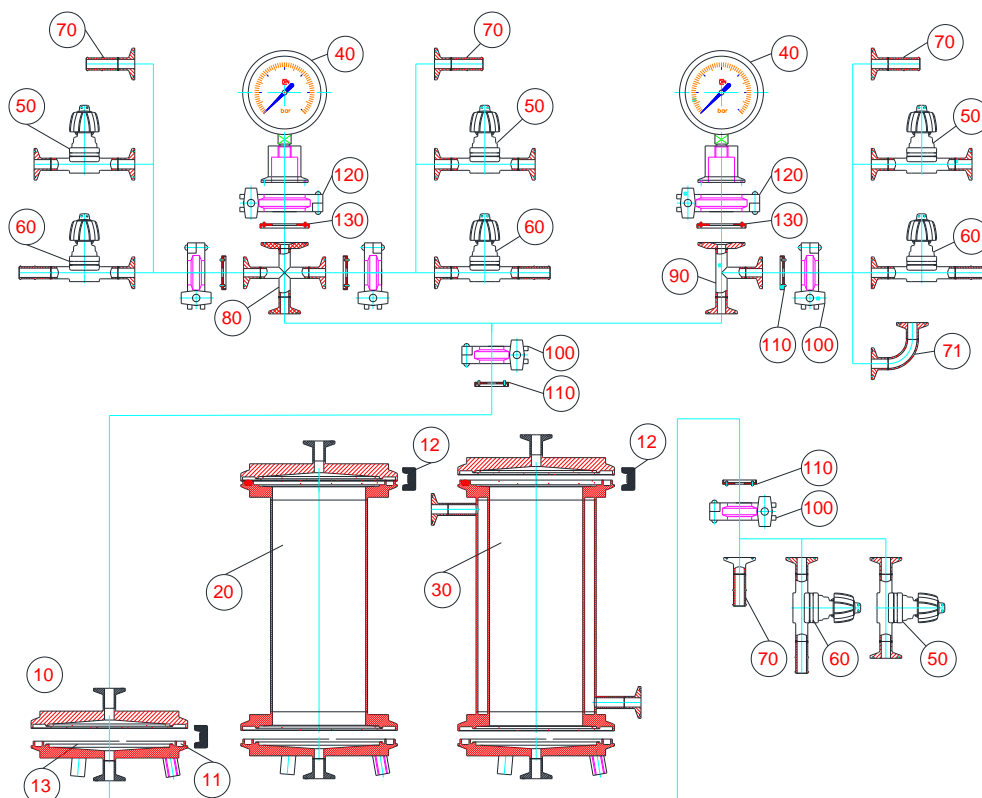
Powering Business Worldwide

Pos.	Description	Article no.
10	BECO INTEGRA LAB 140 P (incl. items 11 (EPDM), 12 + 13)	P7000402
12	Tri-Clamp BECO INTEGRA LAB 140 P	P7510110
13	Perforated plate BECO INTEGRA LAB 140 P	P7000901
40	Diaphragm pressure gauge 0 – 87 psi (0 – 6 bar), NG 63	P7400101
70	Adapter TC DN 8* - Hose clip DN10 DIN 11854 (external diameter 1/2" = 12.7 mm)	P7500301
70	Adapter TC DN 8* - Hose clip 3/8"	P7500302
70	Adapter TC DN 8* - Hose clip 1/4"	P7500305
71	90° bend with 2 x TC DN 8*	P7500401
80	Cross piece, 3 x TC DN 8*, 1 x TC DN 25**	P7500101
90	T-piece, 2 x TC DN 8*, 1 x TC DN 25**	P7500201
100	Tri-Clamp DN 8	P7510101
120	Tri-Clamp DN 25	P7510001

Pos.	Description	100.44 oz (3,000 ml)
20	Filling space (without items. 11+12)	P7000503
30	Filling space with heating jacket (without items 11+12)	P7000504

Pos.	Description	EPDM	Silicone	Viton	FEP coated
11	O-ring BECO INTEGRA LAB 140 P	P7800320	-	P7800321	P7800323
50	Diaphragm valve DN 8, 2 x TC DN 8*	P7400201	-	P7400203	P7400204
60	Diaphragm valve I DN 8, TC DN 8*/Hose clip	P7400301	-	P7400303	P7400304
110	Clamp gasket DN 8	P7510301	P7510302	P7510303	P7510304
130	Clamp gasket DN 25	P7510201	P7510202	P7510203	P7510204

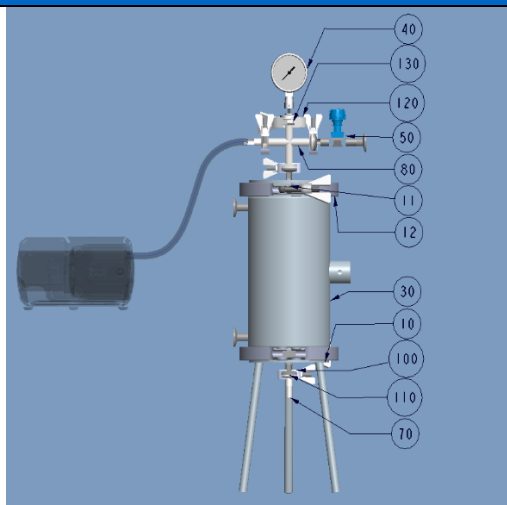
* Tri-Clamp DN 8, ISO 2852 ** Tri-Clamp DN 25, ISO 2852



Potential constellation:

**BECO INTEGRA LAB 140 P – configuration with pump and filling space for depth filtration
(version equipped with EPDM gaskets)**

Pos.	Description	Article no.	Quantity
10	BECO INTEGRA LAB 140 P	P7000402	1
30	Filling space with heating jacket	P7000504	1
12	Clamp BECO INTEGRA LAB 140 P – laboratory filter	P7510110	1
11	O-Ring BECO INTEGRA LAB 140 P	P7800320	1
40	Diaphragm pressure gauge 0-87 psi (0-600 kPa/0-6 bar), NG 63	P7400101	1
50	Diaphragm valve DN 8, 2 x TC DN 8	P7400201	1
70	Adapter TC DN 8 – Hose clip 3/8"	P7500302	2
80	Cross piece 3 x TC DN 8, 1 x TC DN 25	P7500101	1
100	Clamp DN 8	P7510101	4
110	Clamp gasket DN 8, EPDM	P7510301	4
120	Clamp DN 25	P7510001	1
130	Clamp gasket DN 25, EPDM	P7510201	1



Alternatively, gaskets are available in Silicone, Viton and Silicone/FEP-coated material.

Still required (provided by customer):

- Peristaltic pump with hoses (chemically resistant)
- Depth Filter Sheets Ø 140 mm

North America
44 Apple Street
Tinton Falls, NJ 07724
Toll Free: 800 656-3344
(North America only)
Tel: +1 732 212-4700

Greater China
No. 7, Lane 280,
Linhong Road
Changning District, 200335
Shanghai, P.R. China
Tel: +86 21 5200-0099

Europe/Africa/Middle East
Auf der Heide 2
53947 Nettersheim, Germany
Tel: +49 2486 809-0

Friedensstraße 41
68804 Altlußheim, Germany
Tel: +49 6205 2094-0

An den Nahewiesen 24
55450 Langenlonsheim, Germany
Tel: +49 6704 204-0

Asia-Pacific
100G Pasir Panjang Road
#07-08 Interlocal Centre
Singapore 118523
Tel: +65 6825-1668

**For more information, please
email us at filtration@eaton.com
or visit www.eaton.com/filtration**

EN
1A26212
09-2021

© 2021 Eaton. All rights reserved. All trademarks and registered trademarks are the property of their respective owners. All information and recommendations appearing in this brochure concerning the use of products described herein are based on tests believed to be reliable. However, it is the user's responsibility to determine the suitability for his own use of such products. Since the actual use by others is beyond our control, no guarantee, expressed or implied, is made by Eaton as to the effects of such use or the results to be obtained. Eaton assumes no liability arising out of the use by others of such products. Nor is the information herein to be construed as absolutely complete, since additional information may be necessary or desirable when particular or exceptional conditions or circumstances exist or because of applicable laws or government regulations.