

# 13<sup>5</sup>/<sub>8</sub>-in 5,000-psi Packer Installation Tool

Simplified installation for the DL annular BOP

## APPLICATIONS

Annular assembly operations

## BENEFITS

- Ensures proper alignment and orientation during assembly and disassembly
- Improves packer installation time

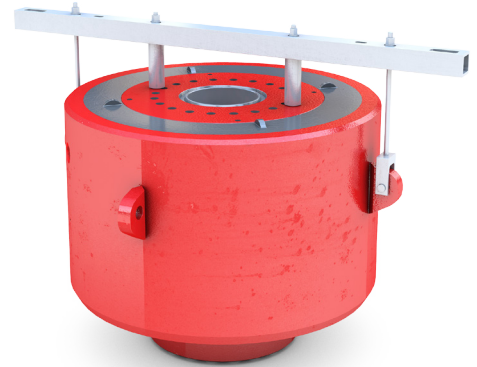
## FEATURES

- Mates hydraulic package components
- Simplifies assembly process

Replacing the packer on the DL\*annular BOP can now be accomplished in a timely manner by using an advanced packer installation tool. The 13<sup>5</sup>/<sub>8</sub>-in 5,000-psi packer installation tool expedites installation time during assembly and disassembly.

## Specifications

Model	Weight, lbm [kg]
5,000 psi	254 [115]



*Packer installation tool for 13<sup>5</sup>/<sub>8</sub> DL annular BOP.*

