

SEH Conduit Outlet Boxes and Covers

UNILETS™ for use with Threaded Rigid Metal Conduit and IMC. Furnished with Internal Ground Screw.

NEC/CEC:
Listed for Ordinary Locations

COMMERCIAL AND INDUSTRIAL FITTINGS: CONDUIT OUTLET BODIES

Applications

- Provide openings for splicing.
- Make straight connections and 90° bends in conduit runs.
- Permit access to conductors for maintenance.

Features

- Accepts 4" octagon outlet box covers.
- Two 8-32 screw holes tapped on 3-1/2" centers.
- Furnished with internal ground screw.

Standard Materials









- Conduit outlet boxes: malleable iron
- Covers: steel and cast malleable iron
- Gaskets: composition fiber

Standard Finishes

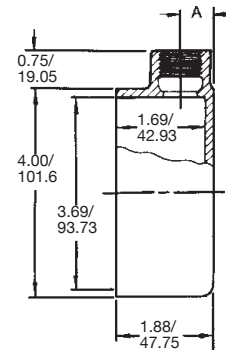
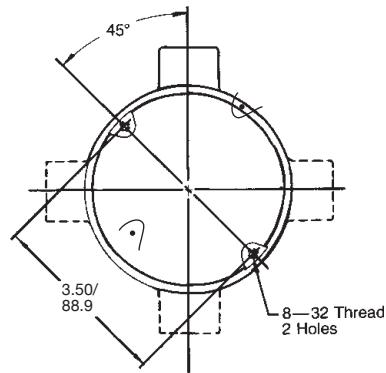
- Boxes and cast covers: triple-coat — (1) zinc electroplate, (2) chromate and (3) epoxy powder coat
- Blank steel cover: zinc electroplate

NEC/CEC Certifications and Compliances

- UL Standard: 514A
- UL Listed: E2527
- CSA Standard: C22.2 No. 18.1

	Description	Hub Size (Inches)	Catalog Number
SEH		1/2	SEH-50
		3/4	SEH-75
SEHC		1/2	SEHC-50
		3/4	SEHC-75
SEHL		1/2	SEHL-50
		3/4	SEHL-75
SEHT		1/2	SEHT-50
		3/4	SEHT-75
SEHX		1/2	SEHX-50
		3/4	SEHX-75
SEH Covers — Furnished with screws ①			
	Hub cover, cast malleable	1/2	SEHK-50 ②
	Cover, steel	Blank	SEHK-B ②
	Cover, cast malleable	Blank	SEHK-BC ②
SEH Gasket			
	Fiber composition		SEH-GK

Dimensions and Wiring Capacity



Hub Size (Inches)	Dimensions "A" Millimeters (Inches)	Capacity dm ³ (in ³)
1/2	16.0 (0.63)	0.29 (18.00)
3/4	19.1 (0.75)	0.29 (18.00)

① SEH covers add no additional cubic inch capacity.

② Meets the Canadian Electrical Code (CEC) for Ordinary Locations..