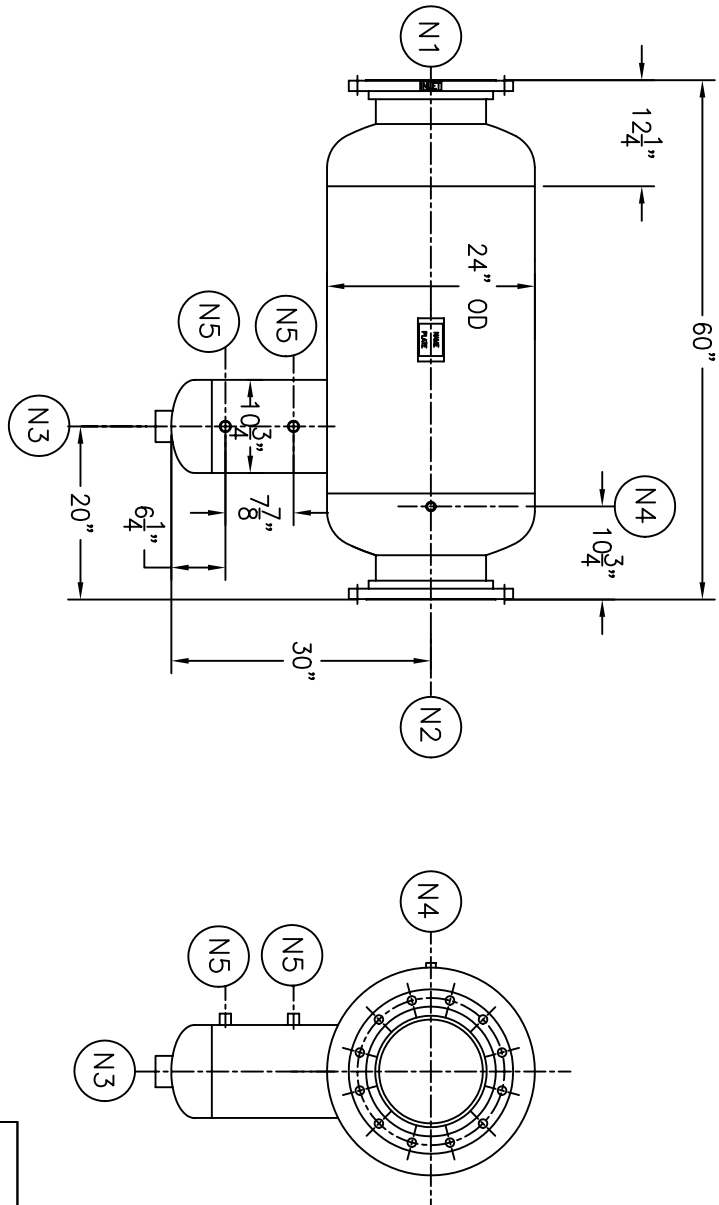


NOZZLE SCHEDULE			
ITEM	QTY.	NAME	DESCRIPTION
N1	1	INLET	12"-150# RFSO ASME B16.5
N2	1	OUTLET	12"-150# RFSO ASME B16.5
N3	1	DRAIN	2 1/2" NPT 3000# COUPLING
N4	1	VENT	1/2" NPT 3000# COUPLING
N5	2	LIQUID LEVEL	1/2" NPT 3000# COUPLING

REV	DATE	CHANGE	ECR	BY	APP
A	04/18/06	NEW ISSUE	D876	LH	VA



- NOTES:
1. UNITS ARE TO BE DESIGNED, FABRICATED & "U" STAMPED (IF REQ'D) IN ACCORDANCE WITH ASME B & PV CODE, SECTION VIII, DIVISION 1 IN COMPLIANCE TO CURRENT PUBLISHED ADDENDA.
 2. ALL DIMENSIONS ARE IN INCHES.
 3. ALL BOLT HOLES ARE TO STRADDLE NATURAL CENTERLINES.
 4. SHIPPING WEIGHT: 525 POUNDS.
 5. DESIGN DATA:

DESIGN PRESSURE- 150 PSIG
 DESIGN TEMPERATURE- 300° F
 MIN. DESIGN METAL TEMP.- -20° F @ 150 PSIG
 HYDROTEST PRESSURE- 195 PSIG
 CORROSION ALLOWANCE- 0 INCHES
 6. MATERIAL: 316/316L S.S

CUSTOMER:
 REG. NO.:
 P.O. NO.:
 TAG NO.:
 PART NO.: 1231LS150S6/U

ELECTRONIC FILE NAME:
 1231LS1S6.DWG
 TOLERANCES UNLESS OTHERWISE SPECIFIED
 PER ENGINEERING STANDARD ES- ---

UNAUTHORIZED USE, MANUFACTURE OR
 REPRODUCTION IN WHOLE OR IN PART IS
 PROHIBITED. DRAWING, DESIGN AND
 OTHER DISCLOSURES PROPERTY OF
 EATON FILTRATION, LLC

		EATON FILTRATION, LLC 900 FAIRMOUNT AVENUE, ELIZABETH, NEW JERSEY 07207					
		NAME 12" TYPE "31-LS" GAS/LIQUID SEPARATOR 150# FLG. SS 316					
DRAWN	LH	DATE	04/18/06	CHECKED	FM	DATE	04/18/06
APP	VA	DATE	04/18/06	SCALE	NTS	ECR	D876
SIZE	DWG	NO		SD1231LS150S6		REV	A