

McGill™ 4125/90 Series Single Pole Toggle Switches

NEC/CEC:
Listed for Ordinary Locations

Applications

- McGill™ full-size, single pole toggle switches are available in several electrical ratings to meet a variety of requirements.
- Ruggedly constructed with metallic toggle and threaded bushing to ensure extended service life.
- Marine, food service, generator, industrial control and office automation markets.
- Appropriate for use in low voltage DC applications.

Features

- A variety of circuits are available.
- Available with screw, solder, and 1/4" Quick connect terminals.
- Mounting hardware and terminal screws (where applicable) furnished unassembled.
- Mounting hardware consists of nickel plated hex nut and knurled nut.
- Indicating plate is furnished for maintained ON-OFF circuits.

Standard Materials

- Base: phenolic +150 °C (+302 °F)
- Bat handle: nickel plated brass
- Bushing: nickel plated brass

NEC/CEC Certifications and Compliances

- UL Recognized Component
- UL File Number: E335442
- UL Standard: 1054, Guide WORY2
- CSA File Number: 249055
- CSA Standard: C22.2 No. 55
- RoHS Compliant



REELS AND SWITCHES: ORDINARY LOCATION SWITCHES

Apletton® OZGEDNEY

Circuitry			Screw Term.			Solder Term.		
A	B	C	Poles	Catalog Number	Rating	Poles	Catalog Number	Rating
10 Amp								
ON	—	OFF	SPST	4125-0001N	10 Amp, 125 Vac/Vdc 5 Amp, 250 Vac/Vdc 1/4 HP, 125 Vac/Vdc	SPST	4125-0002N	10 Amp, 125 Vac/Vdc 5 Amp, 250 Vac/Vdc 1/4 HP, 125 Vac/Vdc
15 Amp								
ON	OFF	ON	SPDT	91-0001N	15 Amp, 125 Vac 10 Amp, 250 Vac 3/4 HP, 120-240 Vac	SPDT	91-0002N	15 Amp, 125 Vac 10 Amp, 250 Vac 3/4 HP, 120-240 Vac
ON	—	ON	SPDT	92-0001N		SPDT	92-0002N	
(ON)	OFF	(ON)	SPDT	93-0001N		SPDT	93-0002N	
ON	OFF	(ON)	SPDT	93-1001N		SPDT	93-1002N	
(OFF)	—	ON	SPST	93-2001N		SPST	93-2002N	
(ON)	—	OFF	SPST	93-3001N		SPST	93-3002N	
ON	—	(ON)	SPDT	93-4001N	SPDT	93-4002N		
20 Amp								
ON	—	OFF	SPST	90-0001N	20 Amp, 125 Vac 12 Amp, 250 Vac 1 HP, 120-240 Vac	SPST	90-0002N	20 Amp, 125 Vac 12 Amp, 250 Vac 1 HP, 120-240 Vac

() Momentary. Poles: SP = single pole, DP = double pole, ST = single throw, DT = double throw.

Shaded catalog numbers are normally stocked items. All other items are made to order. Contact your local sales representative for pricing.

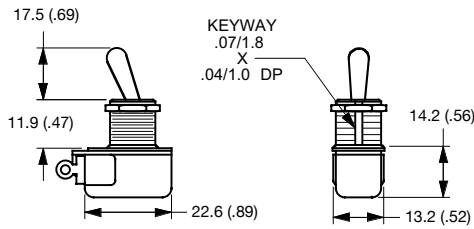
McGill™ 4125/90 Series Single Pole Toggle Switches

NEC/CEC:
Listed for Ordinary Locations

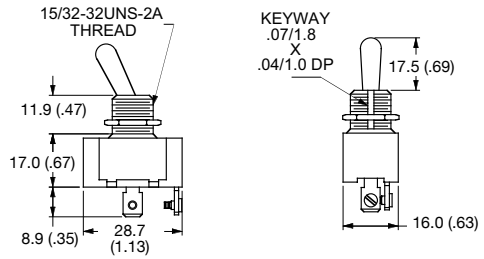
REELS AND SWITCHES: ORDINARY LOCATION SWITCHES

Circuitry			1/4" Q.C. Term.			6" Wire Leads		
A	B	C	Poles	Catalog Number	Rating	Poles	Catalog Number	Rating
10 Amp								
ON	—	OFF	SPST	4125-0003N	10 Amp, 125 Vac/Vdc 5 Amp, 250 Vac/Vdc 1/4 HP, 125 Vac/Vdc	SPST	4125-0004N	10 Amp, 125 Vac/Vdc 5 Amp, 250 Vac/Vdc 1/4 HP, 125 Vac/Vdc
15 Amp								
ON	OFF	ON	SPDT	91-0003N		—	—	—
ON	—	ON	SPDT	92-0003N		—	—	—
(ON)	OFF	(ON)	SPDT	93-0003N	15 Amp, 125 Vac	—	—	—
ON	OFF	(ON)	SPDT	93-1003N	10 Amp, 250 Vac	—	—	—
(OFF)	—	ON	SPST	93-2003N	3/4 HP, 120-240 Vac	—	—	—
(ON)	—	OFF	SPST	93-3003N		—	—	—
ON	—	(ON)	SPDT	93-4003N		—	—	—
20 Amp								
ON	—	OFF	SPST	90-0003N	20 Amp, 125 Vac 12 Amp, 250 Vac 1 HP, 120-240 Vac	—	—	—

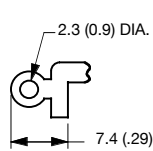
Dimensions in Millimeters (Inches)



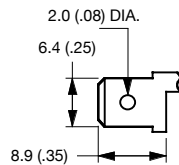
10 Amp Toggle Switch



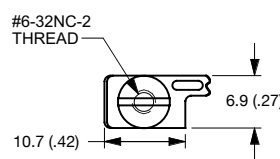
15 & 20 Amp Toggle Switch



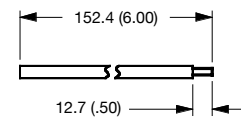
10 Amp Solder Lug Terminal



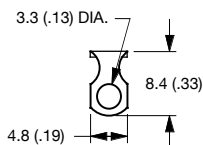
10 Amp 1/4" Q.C. Terminal



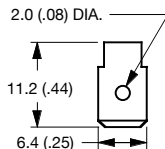
10 Amp Screw Terminal



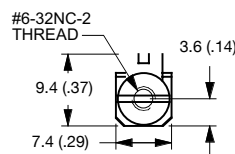
10 Amp Integrated Wire Lead Terminal



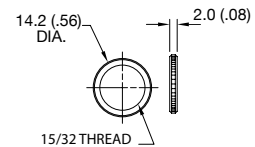
15 & 20 Amp Solder Lug Terminal



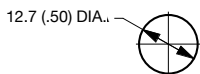
15 & 20 Amp 1/4" Q.C. Terminal



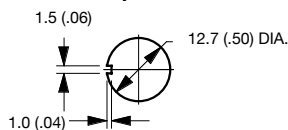
15 & 20 Amp Screw Terminal



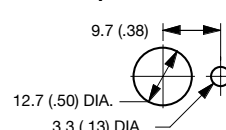
Knurled Nut



Mounting Hole



Mounting Hole With Keyway



Mounting Hole With Locking Ring

() Momentary. Poles: SP = single pole, DP = double pole, ST = single throw, DT = double throw.

Shaded catalog numbers are normally stocked items. All other items are made to order. Contact your local sales representative for pricing.