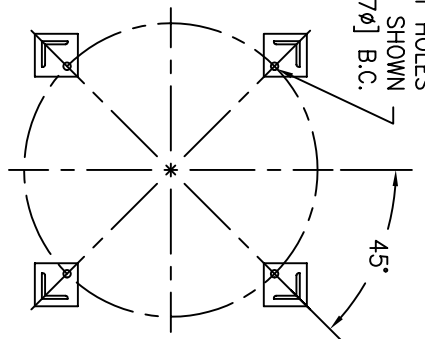


(4) 7/8" ϕ [22 ϕ] BOLT HOLES
LOCATED AS SHOWN
ON 34.13 ϕ [867 ϕ] B.C.

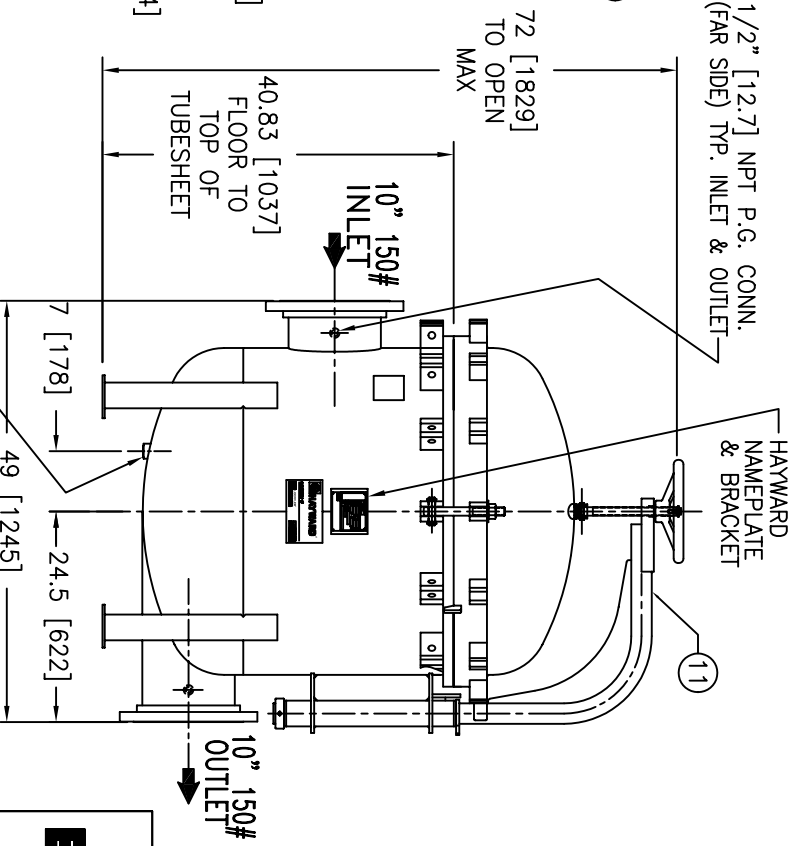
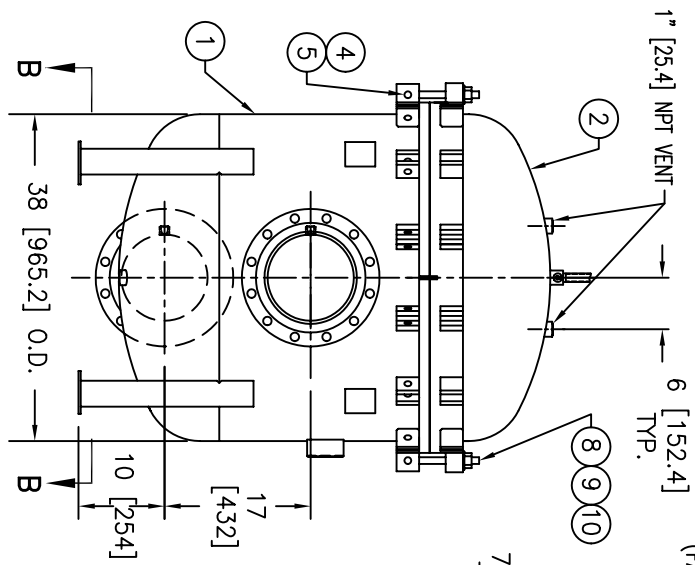


SECTION B-B

ITEM	PART NAME	MATERIAL
1	BODY	SA240 GR. 316/316L
2	COVER	SA240 GR. 316/316L
3	O-RING	BUNA-N
4	PIN	SA193 B7 ZINC PL
5	SNAP RING	STEEL ZINC PL
6	BASKET RESTRAINER	316 SS
7	FILTER BAG RETAINER	316 SS
8	EYE BOLT	SA193 B7 ZINC PL
9	HEX NUT	SA194 2H ZINC PL
10	WASHER	STEEL ZINC PL
11	DAVIT ASSEMBLY	CARBON STEEL

NOTES:

- UNITS ARE TO BE DESIGNED, FABRICATED & "U" STAMPED IN ACCORDANCE WITH ASME SECT. VIII, DIV. 1 BOILER & PRESSURE VESSEL CODE, IN COMPLIANCE TO LATEST ADDENDA.
- INLET / OUTLET FLANGE CONNECTIONS PER ANSI B 16.5.
- DESIGN PRESSURE: 150 PSI (MAMP)
DESIGN TEMPERATURE 250° F.
MDMT - -20° F @ 150 PSI.
- ALL DIMENSIONS ARE IN INCHES / (MM).
- ALL BOLT HOLES ARE TO STRADDLE NATURAL CENTERLINES.
- APPROX. WEIGHT (DRY) 1500 LB. (680 KG.)



ELECTRONIC FILE NAME: HD1210TS.DWG
REF. ECR D666 DATE 01/23/06

UNAUTHORIZED USE, MANUFACTURE OR REPRODUCTION IN WHOLE OR IN PART IS PROHIBITED. DRAWING, DESIGN AND OTHER DISCLOSURES PROPERTY OF EATON FILTRATION, LLC

EATON		EATON FILTRATION, LLC	
900 FAIRMOUNT AVENUE, ELIZABETH, NEW JERSEY 07207			
NAME: MAXILINE MBF1202HD FILTER VESSEL			
10" 150# RF INLET / TANGENTIAL OUTLET			
STAINLESS STEEL			
DRAWN	VA	DATE	11/08/00
SIZE	DWG	CERT.	LF
A	NO	DATE	11/08/00
			REV
			E