



Quick exhaust valve

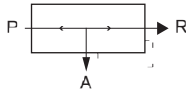
- For direct mounting at consumer
- Short way to exhaust
- Fast cylinder movement

Quick exhaust-valve that shortens the exhaust time for pneumatic linear and rotary actuators.

Circuit function:

When pressure is applied to input P it goes to output A. The ventilation R is locked.

When pressure in A is more than P then A is vented to R.



Technical data

Body material

Medium
Medium temperature
Seal material O-Ring
Nominal pressure

Brass nickel-plated
air, neutral gases
0 to +80 °C
NBR
0.5 to 12 bar¹⁾

Body material

Medium
Medium temperature
Seal material O-Ring
Nominal pressure

Stainless steel AISI 316
air, neutral gases
-10 to +120 °C
to 1/4" FKM, from 3/8" PU
0.5 to 40 bar¹⁾

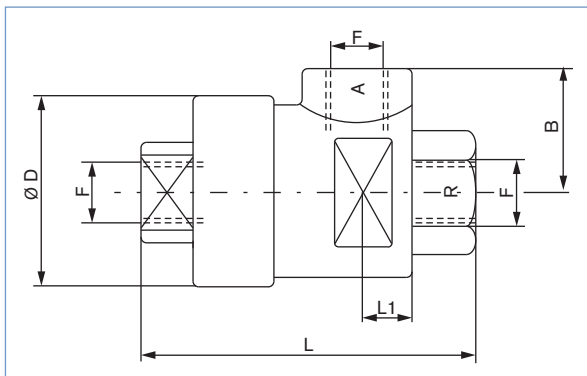
¹⁾ Pressure values [bar]: Overpressure with respect to atmospheric pressure

Other versions, ports, materials, seal materials on request.

Ordering chart, version brass nickel-plated

Port connections	Pressure range [bar]	F	B	Ø D	L	Item no.
G 1/8	0.5-12	G 1/8	19.5	28.0	42.0	783 709
G 1/4	0.5-12	G 1/4	25.0	34.5	54.0	783 710
G 3/8	0.5-12	G 3/8	26.5	38.0	60.5	772 886
G 1/2	0.5-12	G 1/2	32.0	43.0	72.0	783 711
G 3/4	0.5-12	G 3/4	37.0	48.5	88.0	771 047
G 1	0.5-12	G 1	48.0	75.5	109.0	771 048
M 5	0.5-12	M 5	10.0	20.0	25.0	772 885

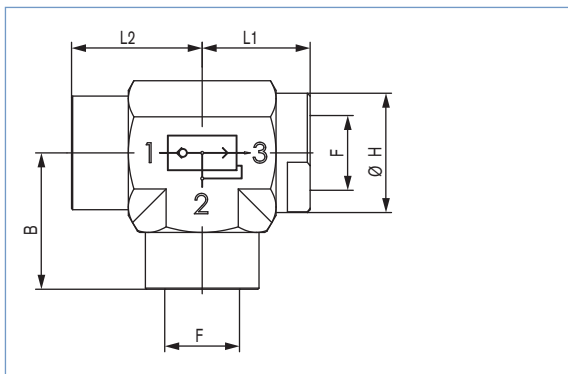
Dimensions [mm]



Ordering chart, version stainless steel

Port connections	Q _N value air [l/min]: P → A	Q _N value air [l/min]: A → R	Pressure range [bar]	F	B	H	L1	L2	Item no.
G 1/8	650	1100	0.5-40	G 1/8	23.0	17.0	16.5	21.0	771 467
G 1/4	1290	2780	0.5-40	G 1/4	23.0	17.0	16.5	21.0	771 468
G 3/8	1810	3810	0.5-40	G 3/8	26.0	22.0	19.0	25.5	771 469
G 1/2	3810	5490	0.5-40	G 1/2	32.5	27.0	23.0	31.0	771 470

Dimensions [mm]



To find your nearest Bürkert facility, click on the orange box →

www.burkert.com

In case of special application conditions, please consult for advice.

Subject to alterations
© Christian Bürkert GmbH & Co. KG

1511/2_EU-en_00895232