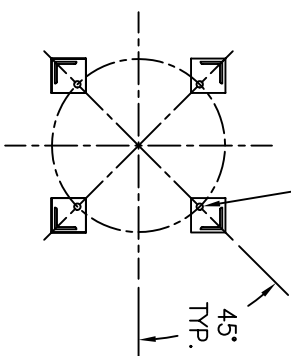


SECTION A-A



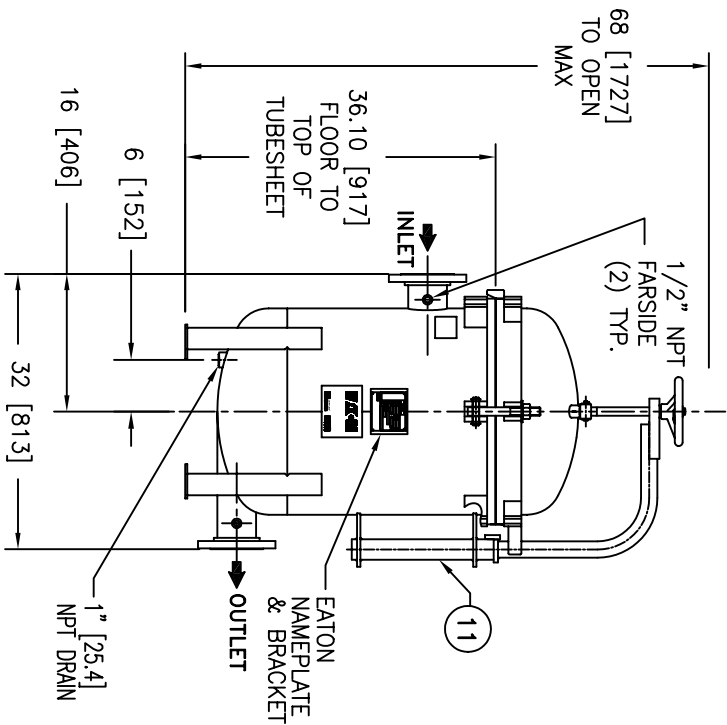
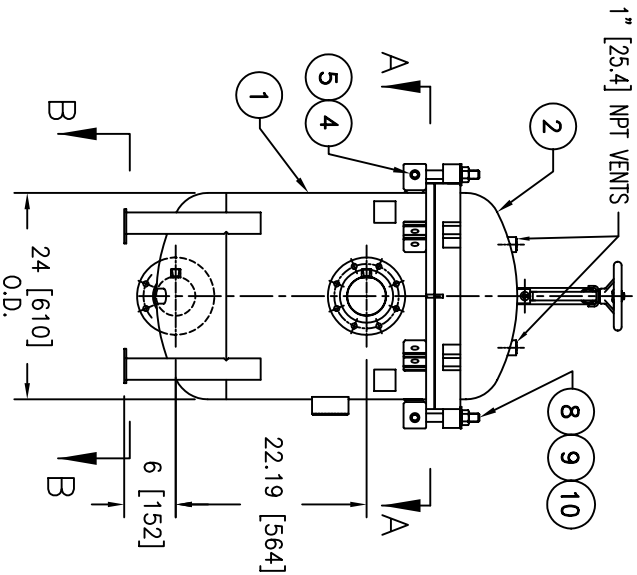
SECTION B-B

(4) 3/4" DIA BOLT HOLES
LOCATED AS SHOWN
ON 20-1/8" B.C.D.

ITEM	PART NAME	MATERIAL
1	BODY	SA240 304/304L
2	COVER	SA240 304/304L
3	O-RING	BUNA-N
4	PIN	SA193 B7 ZINC PL
5	SNAP RING	STEEL ZINC PL
6	BASKET RESTRAINER	304 SS
7	FILTER BAG RETAINER	316 SS
8	EYE BOLT	SA193 B7 ZINC PL
9	HEX NUT	SA194 2H ZINC PL
10	WASHER	STEEL ZINC PL
11	DAVIT ASSEMBLY	CARBON STEEL

NOTES:

1. UNITS ARE TO BE DESIGNED, FABRICATED & "U" STAMPED IN ACCORDANCE WITH ASME SECT. VIII, DIV. 1 BOILER & PRESSURE VESSEL CODE, IN COMPLIANCE TO LATEST ADDENDA.
2. INLET / OUTLET FLANGE CONNECTIONS PER ANSI B 16.5.
3. DESIGN PRESSURE: 150 PSI (MAMP)
DESIGN TEMPERATURE 250° F.
MDMT - -20° F @ 150 PSI.
4. ALL DIMENSIONS ARE IN INCHES / [MM].
5. ALL BOLT HOLES ARE TO STRADDLE NATURAL CENTERLINES.
6. APPROX. WEIGHT (DRY) 390 LB. (177 KG.)



ELECTRONIC FILE NAME: HD0404TS-304.DWG
REF. ECR E370 DATE 12/13/06

UNAUTHORIZED USE, MANUFACTURE OR REPRODUCTION IN WHOLE OR IN PART IS PROHIBITED. DRAWING, DESIGN AND OTHER DISCLOSURES PROPERTY OF EATON FILTRATION, LLC

DRAWN	DATE	DATE	DATE	REV
FJM	12/13/06	12/13/06	12/13/06	A
SIZE	DWG NO			
A	HD0404TS-304			A

EATON

900 FAIRMOUNT AVENUE, ELIZABETH, NEW JERSEY 07207

EATON FILTRATION, LLC

NAME: MAXILINE MBF0402HD FILTER VESSEL
4" 150# RF INLET/TANGENTIAL OUTLET
STAINLESS STEEL-304

CERTIFIED FOR:
P.O. NO.:
SALES ORDER NO.:
QUOTE NO.:
TAG NO.:
VESSEL CODE: MBF-0402-BB10-040A-UT-11HD
PART NUMBER: F3AV0400003-304