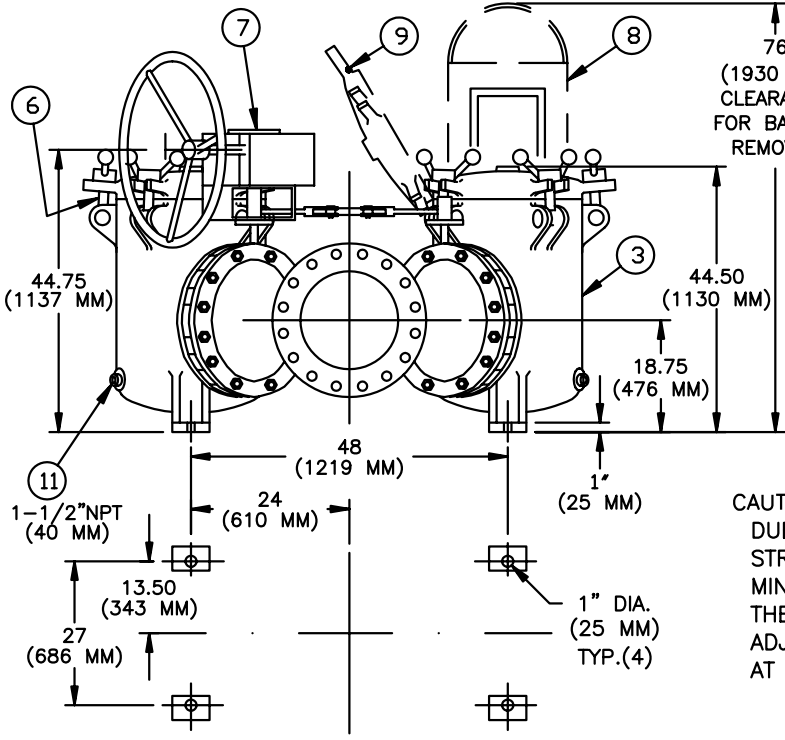


| NO. | DESCRIPTION | MATERIAL |
|-----|-------------------|--|
| 1 | FLANGED Y | BRONZE |
| 2 | BUTTERFLY VALVE | BODY: IRON SEAL: BUNA-N DISC: ALUM. BRONZE |
| 3 | BODY | BRONZE |
| 4 | LINKAGE | STEEL |
| 5 | COVER | BRONZE |
| 6 | SWING BOLTS | CARBON STEEL |
| 7 | GEAR OPERATOR | IRON |
| 8 | BASKET | |
| | PERF. DIA. | |
| | MESH SIZE | |
| 9 | O-RING | BUNA-N |
| 10 | BOLT/NUT | CARBON STEEL |
| 11 | PIPE PLUG (DRAIN) | BRONZE |
| 12 | PIPE PLUG (VENT) | BRONZE |
| 13 | PIPE PLUG (GAGE) | BRONZE |

NOTES:

1. INLET/OUTLET FLANGE PER ANSI B16.24 CLASS 150 FF FLANGE.
2. MAX. WORKING PRESS.: 150 PSI @100° F. (10.3 BAR @ 37.8° C)
3. DIMENSIONS ARE IN INCHES / (MM).
4. WEIGHT: 4900 LBS. (2223 KG.)



CUSTOMER:
P.O. NO.:
REG. NO.:
QUOTE NO.:
TAG NO.:

CAUTION:

DUE TO THE TYPE OF CONSTRUCTION OF THIS STRAINER, ALL DIMENSIONS MAY VARY PLUS OR MINUS 1.50% OF THE CHARTED FIGURES. THE CUSTOMER IS ADVISED NOT TO FABRICATE ADJOINING PIPING UNTIL RECEIPT OF THE UNIT AT THE JOB SITE.

PLAN VIEW (MOUNTING)

PART NO.: ST052140BF10C

| | | | | | | | |
|-------|-----|--|--------|-------|----|------|--------|
| | | EATON FILTRATION, LLC 70 WOOD AVENUE SOUTH, ISELIN, NEW JERSEY 08830 | | | | | |
| | | NAME MODEL 52 DUPLEX STRAINER 150# FLAT FACE FLANGE SIZE 14" BRONZE | | | | | |
| DRAWN | FM | DATE | 8/6/01 | CERT. | LF | DATE | 8/6/01 |
| SIZE | DWG | SD052109 | | | | REV | C |
| A | NO | | | | | | |

ELECTRONIC FILE NAME: SD052109.DWG
REF. ECR 0058909 DATE 07/14/11

UNAUTHORIZED USE, MANUFACTURE OR REPRODUCTION IN WHOLE OR IN PART IS PROHIBITED. DRAWING, DESIGN AND OTHER DISCLOSURES PROPERTY OF EATON FILTRATION, LLC