

Coalescing Filter – Standard SM2

= "Most Popular"



SM2-04-ELV0

Features

- Stainless Steel Construction Handles Most Corrosive Environments
- Meets NACE Specifications MR-01-75/ISO 15156
- 1/8" Female Threaded Drain
- High Flow: 1/2" - 45 SCFM[§]

[§]SCFM = Standard cubic feet per minute at 90 PSIG inlet and 5 PSIG pressure drop.

Specifications

Flow Capacity*	Port Size	0.3 Micron 46 SCFM
Bowl Capacity		4.0 Ounces
Filter Rating		0.01 Micron
Port Threads		1/2 Inch
Pressure & Temperature Ratings –		
Metal Bowl –		0 to 300 PSIG (0 to 20.7 bar) 0°F to 180°F (-18°C to 82°C)
Metal Bowl with Sight Gauge –		0 to 250 PSIG (0 to 17.2 bar) 0°F to 150°F (-18°C to 66°C)
Automatic Float Drain –		0 to 175 PSIG (0 to 12 bar) 32°F to 150°F (0°C to 66°C)

Note: Air must be dry enough to avoid ice formation at temperatures below 32°F (0°C).

Useful Retention**	1.7 Ounce
Weight	1.9 lb. (0.85 kg)

* Inlet pressure 90 PSIG (6.2 bar) and 5 PSID (0.3 bar) pressure drop.

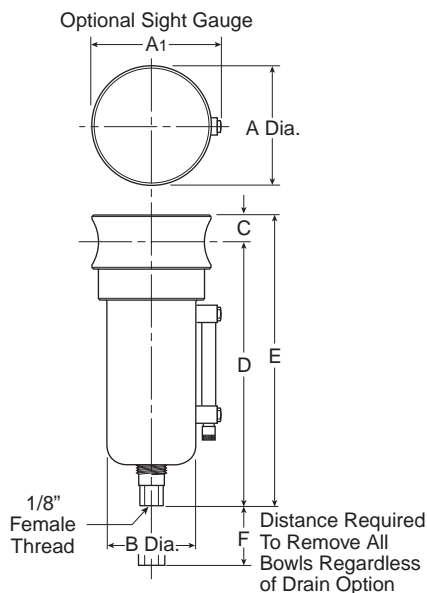
**Useful Retention refers to volume below the quiet zone baffle.

Materials of Construction

Body	316 Stainless Steel
Bowl	316 Stainless Steel
Drain	316 Stainless Steel
Element Holder	Acetal
Filter Element	Borosilicate Fiber
Seals	Fluorocarbon
Sight Gauge	Isoplast



Stainless Steel Products



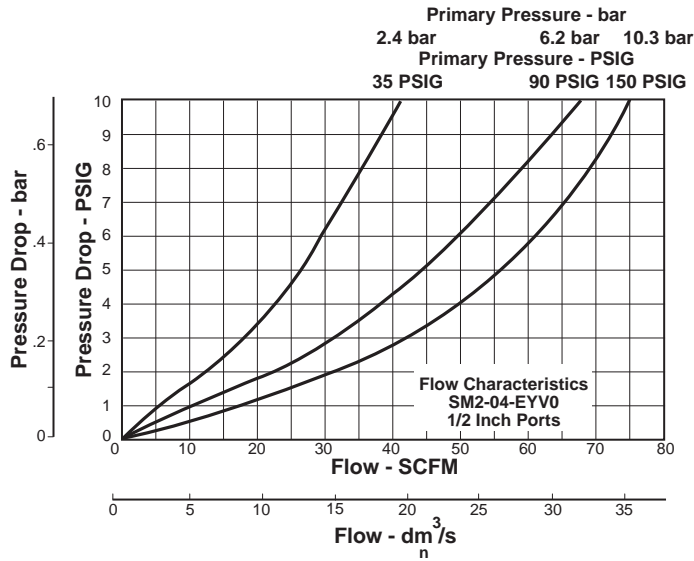
Dimensions

Models	Inches (mm)	A	A1	B	C	D	E	F
Miniature Unit SM2-04-XXXX		2.38 (60)	2.50 (64)	1.75 (44)	0.56 (14)	5.00 (127)	5.56 (141)	2.12 (54)



SM2 Filter Kits & Accessories

- Drain Kit –
 - Automatic Drain SRP-96-007
- Manual Drain –
 - Small (Old) SRP-96-008
 - Large (New) SAP05481
- Filter Element Kits – 0.01 Micron..... SRP-96-006
- Liquid Level Sight Gauge Kit SRP-96-026
- Pipe Nipple – 1/2" 316 Stainless SteelSRP-96-010




 Stainless Steel Products

Ordering Information

Model Type	Port Size	Model Number	Model Number
Manual Drain	1/2	SM2-04-ELV0	—
Automatic Drain	1/2	—	SM2-04-EHV0

Options - To order an option supplied with the unit model, add the appropriate coded suffix letter in the designated position of the model number.