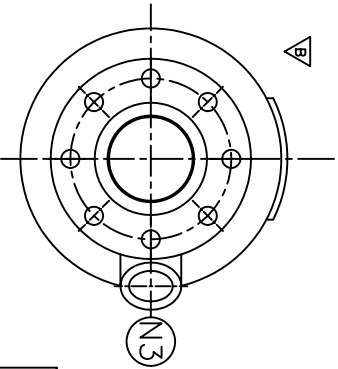
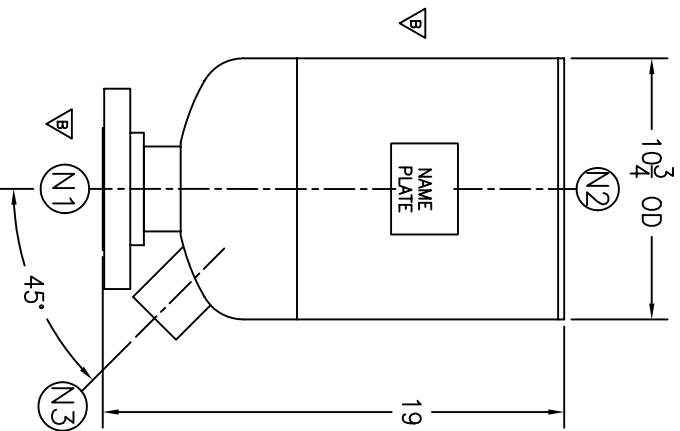


NOZZLE SCHEDULE			
ITEM	QTY.	NAME	DESCRIPTION
N1	1	INLET	3" 300# RFSO ASME B16.5
N2	1	OUTLET	3" STD. WGT. PIPE
N3	1	DRAIN	1-1/2" NPT 3000# COUPLING

REV	DATE	CHANGE	ECR	BY	APP
A	6/15/00	NEW RELEASE	8644	GC	FG
B	12/05/03	DELETED NAMEPL. BRACKET, NAMEPL., INLET TAG, ADDED EXHAUST HEAD NAMEPL.	B892	GC	FG
C	11/1/05	REVISED TITLE BLOCK	D507	FM	LH



NOTES:

1. ALL DIMENSIONS ARE IN INCHES.
2. ALL BOLT HOLES ARE TO STRADDLE NATURAL CENTERLINES.
3. SHIPPING WEIGHT: 100 POUNDS.
4. DESIGN DATA:
 - DESIGN PRESSURE- ATMOSPHERIC
 - DESIGN TEMPERATURE- AMBIENT
 - CORROSION ALLOWANCE- 0 INCHES
5. MATERIAL: CARBON STEEL.

ELECTRONIC FILE NAME:
SD3EHC-3 DWG.
TOLERANCES UNLESS OTHERWISE SPECIFIED
PER ENGINEERING STANDARD ES- --

UNAUTHORIZED USE, MANUFACTURE OR
REPRODUCTION IN WHOLE OR IN PART IS
PROHIBITED. DRAWING, DESIGN AND
OTHER DISCLOSURES PROPERTY OF
EATON FILTRATION, LLC

EATON	EATON FILTRATION, LLC	
	900 FAIRMOUNT AVENUE, ELIZABETH, NEW JERSEY 07207	
NAME	3" TYPE "40-EHMF" EXHAUST HEAD 300# FLG (CSTL)	

CUSTOMER:
REG. NO.:
P.O. NO.:
TAG NO.:
PART NO.: 3EHC-300

DRAWN	GC	DATE	CHECKED	FJM	DATE
APP	FG	6/15/00	SCALE	NTS	6/15/00
SIZE	DWG	NO	SD3EHC-300		REV
A					C